



**Water Monitoring Result at C7 - Windsor House
Mid-Flood Tide**

Date	Time	Weather Condition	Sampling Depth		Water Temperature			pH			Salinity			DO Saturation			DO			Turbidity			Suspended Solids	
					°C			-			ppt			%			mg/L			NTU			mg/L	
					Value	Average		Value	Average		Value	Average		Value	Average		Value	Average		Value	Average		Value	Average
27/5/2016	20:00	Fine	Middle	-	27.10	27.10	27.05	8.51	8.51	8.53	31.46	31.46	31.47	76.0	76.7	75.9	4.83	4.88	4.83	4.44	5.20	4.50	4	3.50
	20:01		Middle	-	27.00	27.00		8.55	8.55		31.47	31.47		75.7	75.1		4.82	4.78		4.18	4.16		3	
30/5/2016	14:25	Fine	Middle	-	28.50	28.50	28.55	8.43	8.43	8.45	28.60	28.60	28.60	75.4	74.7	74.8	4.98	4.94	4.94	3.62	3.63	3.61	4	4.50
	14:27		Middle	-	28.60	28.60		8.46	8.46		28.59	28.59		74.0	75.0		4.89	4.96		3.63	3.55		5	
1/6/2016	16:45	Fine	Middle	-	29.60	29.60	29.70	8.36	8.36	8.43	26.02	26.02	26.01	82.7	81.7	81.4	5.45	5.38	5.36	4.40	4.22	4.17	3	2.50
	16:47		Middle	-	29.80	29.80		8.49	8.49		26.00	26.00		81.0	80.1		5.33	5.27		4.05	4.02		2	
3/6/2016	17:30	Fine	Middle	-	29.30	29.30	29.35	8.59	8.59	8.60	25.98	25.98	25.98	72.8	72.1	72.4	4.82	4.77	4.79	5.99	6.28	6.08	5	4.50
	17:32		Middle	-	29.40	29.40		8.61	8.61		25.97	25.97		72.5	72.2		4.80	4.78		6.14	5.92		4	
6/6/2016	17:50	Cloudy	Middle	-	27.20	27.20	27.20	8.48	8.48	8.48	28.44	28.44	28.44	75.8	75.7	75.5	5.13	5.13	5.12	2.15	2.18	2.13	2	3.00
	17:51		Middle	-	27.20	27.20		8.48	8.48		28.44	28.44		75.1	75.5		5.09	5.11		2.11	2.06		4	
8/6/2016	19:00	Cloudy	Middle	-	27.40	27.40	27.40	8.36	8.36	8.36	28.59	28.59	28.59	71.5	73.7	72.5	4.83	4.96	4.89	1.46	1.42	1.44	6	6.00
	19:01		Middle	-	27.40	27.40		8.36	8.36		28.59	28.59		72.2	72.6		4.87	4.89		1.40	1.48		6	
10/6/2016	20:26	Cloudy	Middle	-	26.70	26.70	26.65	8.57	8.57	8.57	29.55	29.55	29.55	74.6	74.9	74.8	5.07	5.10	5.09	1.95	1.98	1.98	<2	<2
	20:27		Middle	-	26.60	26.60		8.56	8.56		29.55	29.55		74.7	74.8		5.08	5.09		1.97	2.03		<2	
14/6/2016	2:29	Cloudy	Middle	-	27.80	27.80	27.90	8.25	8.25	8.25	24.96	24.96	24.96	71.3	71.8	71.7	4.84	4.88	4.87	2.92	2.98	2.93	12	12.00
	2:30		Middle	-	28.00	28.00		8.25	8.25		24.96	24.96		71.7	72.1		4.87	4.90		2.94	2.88		12	
16/6/2016	3:10	Cloudy	Middle	-	28.30	28.30	28.30	8.42	8.42	8.42	22.11	22.11	22.11	75.6	76.4	75.7	5.20	5.26	5.21	1.89	1.87	1.84	2	2.00
	3:11		Middle	-	28.30	28.30		8.42	8.42		22.11	22.11		75.4	75.4		5.19	5.19		1.77	1.84		2	
18/6/2016	18:20	Fine	Middle	-	27.60	27.60	27.60	8.37	8.37	8.42	25.81	25.81	25.81	74.5	75.1	74.8	5.09	5.13	5.11	11.50	11.31	11.32	6	7.00
	18:22		Middle	-	27.60	27.60		8.46	8.46		25.81	25.81		74.5	75.0		5.09	5.12		11.22	11.24		8	
20/6/2016	17:45	Sunny	Middle	-	29.00	29.00	29.00	8.76	8.75	8.76	25.29	25.29	25.29	86.7	87.4	86.9	5.79	5.84	5.81	6.36	6.78	6.59	7	6.50
	17:46		Middle	-	29.00	29.00		8.76	8.76		25.29	25.29		87.1	86.5		5.82	5.78		6.63	6.60		6	
22/6/2016	17:35	Fine	Middle	-	29.10	29.10	29.10	8.72	8.72	8.72	28.27	28.27	28.28	83.8	84.1	83.9	5.50	5.53	5.51	7.85	7.83	7.88	6	6.50
	17:36		Middle	-	29.10	29.10		8.71	8.71		28.28	28.28		84.3	83.4		5.53	5.47		7.94	7.88		7	
24/6/2016	19:06	Fine	Middle	-	29.00	29.00	29.05	8.60	8.60	8.60	29.15	29.15	29.15	75.4	78.4	77.3	4.93	5.12	5.05	6.57	6.25	6.40	9	8.50
	19:07		Middle	-	29.10	29.10		8.60	8.60		29.14	29.14		78.1	77.1		5.10	5.04		6.34	6.44		8	

Remarks:
Single underline denotes exceedance over Action Level.
Double underline denotes exceedance over Limit Level.



**Water Monitoring Result at C1 - HKCEC Extension
Mid-Flood Tide**

Date	Time	Weather Condition	Sampling Depth		Water Temperature			pH			Salinity			DO Saturation		DO		Turbidity		Suspended Solids				
					°C			-			ppt			%		mg/L		NTU		mg/L				
			m	Value	Average	Value	Average	Value	Average	Value	Average	Value	Average	Value	Average	Value	Average	Value	Average	Value	Average			
27/5/2016	21:33	Fine	Middle	2.0	25.30	25.30	25.35	8.23	8.24	8.26	30.26	30.26	30.26	62.1	61.9	61.4	4.08	4.06	4.03	4.78	4.76	4.66	8	7.00
	21:34		Middle	2.0	25.40	25.40		8.29	8.29		30.25	30.25		60.0	61.4		3.94	4.03		4.60	4.48		6	
30/5/2016	14:04	Fine	Middle	2.5	28.20	28.20	28.20	8.54	8.54	8.54	29.36	29.36	29.36	62.0	61.4	60.8	4.11	4.07	4.03	4.00	3.97	3.94	4	3.50
	14:06		Middle	2.5	28.20	28.20		8.54	8.54		29.35	29.35		60.8	59.0		4.03	3.91		3.96	3.81		3	
1/6/2016	15:16	Fine	Middle	3.0	28.50	28.50	28.50	8.60	8.60	8.61	27.31	27.31	27.32	74.5	74.2	73.7	4.97	4.94	4.91	2.86	2.74	2.69	3	3.00
	15:18		Middle	3.0	28.50	28.50		8.61	8.61		27.32	27.32		72.9	73.0		4.86	4.86		2.64	2.52		3	
3/6/2016	16:20	Fine	Middle	3.0	28.50	28.50	28.50	8.64	8.64	8.65	27.40	27.40	27.41	75.1	78.3	77.3	5.01	5.22	5.15	4.15	4.00	3.96	5	5.50
	16:22		Middle	3.0	28.50	28.50		8.65	8.65		27.41	27.41		78.5	77.2		5.23	5.15		3.76	3.94		6	
6/6/2016	21:00	Cloudy	Middle	3.0	26.50	26.50	26.55	8.53	8.53	8.54	30.27	30.27	30.27	74.6	75.1	74.4	5.05	5.09	5.04	1.69	1.80	1.75	3	3.00
	21:02		Middle	3.0	26.60	26.60		8.54	8.54		30.27	30.27		74.5	73.4		5.04	4.97		1.77	1.75		3	
8/6/2016	22:17	Cloudy	Middle	3.0	26.90	26.90	26.90	8.51	8.51	8.51	29.38	29.38	29.38	70.3	70.4	69.7	4.75	4.76	4.71	3.48	3.50	3.64	7	7.00
	22:18		Middle	3.0	26.90	26.90		8.51	8.51		29.38	29.38		69.5	68.7		4.70	4.64		3.77	3.80		7	
10/6/2016	0:19	Cloudy	Middle	2.5	25.60	25.60	25.55	8.36	8.36	8.37	27.02	27.02	27.02	70.1	69.7	69.9	4.93	4.90	4.91	3.55	3.52	3.56	4	4.00
	0:20		Middle	2.5	25.50	25.50		8.38	8.38		27.02	27.02		70.2	69.5		4.93	4.89		3.57	3.59		4	
14/6/2016	0:38	Cloudy	Middle	2.5	28.30	28.30	28.30	8.27	8.27	8.28	23.76	23.76	23.77	74.1	75.1	74.7	5.05	5.12	5.09	2.32	2.37	2.32	2	2.50
	0:39		Middle	2.5	28.30	28.30		8.29	8.29		23.77	23.77		75.5	74.0		5.15	5.05		2.31	2.27		3	
16/6/2016	5:38	Cloudy	Middle	2.5	28.00	28.00	28.00	8.54	8.54	8.54	21.90	21.91	21.90	70.8	70.6	70.7	4.90	4.89	4.89	2.73	2.75	2.71	3	3.00
	5:39		Middle	2.5	28.00	28.00		8.54	8.54		21.90	21.90		70.7	70.6		4.89	4.89		2.65	2.69		3	
18/6/2016	17:21	Fine	Middle	2.5	26.90	26.90	20.20	8.55	8.55	8.56	26.93	26.94	26.93	56.1	55.0	55.2	3.85	3.77	3.79	7.14	7.18	7.18	9	8.50
	17:23		Middle	2.5	0.00	27.00		8.56	8.56		26.93	26.93		55.0	54.7		3.78	3.76		7.19	7.20		8	
20/6/2016	17:20	Sunny	Middle	3.5	28.30	28.30	28.30	8.78	8.78	8.79	25.70	25.73	25.73	77.4	77.0	77.4	5.22	5.19	5.22	7.89	7.96	7.99	10	10.00
	17:22		Middle	3.5	28.30	28.30		8.80	8.80		25.74	25.74		77.9	77.4		5.26	5.22		8.07	8.02		10	
22/6/2016	21:05	Fine	Middle	2.5	28.10	28.10	28.20	8.46	8.46	8.50	28.74	28.74	28.74	83.6	86.2	85.1	5.55	5.71	5.64	5.28	5.21	5.30	7	7.50
	21:06		Middle	2.5	28.30	28.30		8.53	8.53		28.74	28.74		85.2	85.2		5.65	5.63		5.25	5.45		8	
24/6/2016	20:28	Fine	Middle	2.5	29.50	29.50	29.55	8.46	8.46	8.47	28.85	28.85	28.85	72.8	73.6	73.0	4.75	4.78	4.74	2.88	2.24	2.47	8	7.00
	20:29		Middle	2.5	29.60	29.60		8.48	8.48		28.85	28.85		73.0	72.4		4.74	4.70		2.29	2.48		6	

Remarks:
Single underline denotes exceedance over Action Level.
Double underline denotes exceedance over Limit Level.



**Water Monitoring Result at P1 - HKCEC Phase I
Mid-Flood Tide**

Date	Time	Weather Condition	Sampling Depth		Water Temperature			pH			Salinity			DO Saturation			DO			Turbidity			Suspended Solids	
					°C			-			ppt			%			mg/L			NTU			mg/L	
			m		Value	Average		Value	Average		Value	Average		Value	Average		Value	Average		Value	Average		Value	Average
27/5/2016	21:05	Fine	Middle	2.0	25.00	25.00	25.05	8.48	8.48	8.48	30.76	30.76	30.76	76.0	75.7	74.8	5.01	4.98	4.93	8.40	8.19	8.19	7	7.00
	21:06		Middle	2.0	25.10	25.10		8.48	8.48		30.76	30.76		74.7	72.7		4.92	4.79		8.04	8.11		7	
30/5/2016	13:48	Fine	Middle	2.5	30.00	30.00	30.00	8.48	8.46	8.48	28.38	28.38	28.37	67.1	67.2	67.3	4.34	4.35	4.35	3.88	3.76	3.78	3	3.50
	13:50		Middle	2.5	30.00	30.00		8.49	8.49		28.35	28.35		67.5	67.2		4.37	4.35		3.75	3.74		4	
1/6/2016	15:00	Fine	Middle	3.0	29.40	29.40	28.75	8.50	8.50	8.53	26.32	26.32	26.31	78.9	79.9	78.8	5.20	5.27	5.19	2.76	2.75	2.75	5	4.00
	15:02		Middle	3.0	29.60	26.60		8.56	8.56		26.30	26.30		78.1	78.1		5.14	5.14		2.75	2.75		3	
3/6/2016	16:04	Fine	Middle	3.0	29.40	29.40	29.45	8.51	8.51	8.56	26.24	26.24	26.25	86.1	84.6	84.1	5.69	5.58	5.55	3.86	3.97	4.00	5	4.50
	16:06		Middle	3.0	29.50	29.50		8.60	8.60		26.25	26.25		83.5	82.0		5.51	5.41		3.99	4.16		4	
6/6/2016	20:26	Cloudy	Middle	3.0	26.90	26.90	26.75	8.57	8.57	8.56	29.71	29.71	29.71	69.6	70.4	69.6	4.70	4.76	4.71	2.33	2.27	2.21	3	2.50
	20:27		Middle	3.0	26.60	26.60		8.54	8.54		29.71	29.71		69.5	69.0		4.70	4.67		2.13	2.11		2	
8/6/2016	21:48	Cloudy	Middle	3.0	27.80	27.80	27.80	8.55	8.55	8.55	28.74	28.74	28.75	72.8	74.0	73.3	4.87	4.95	4.91	1.74	1.76	1.75	7	7.00
	21:49		Middle	3.0	27.80	27.80		8.55	8.55		28.75	28.75		74.1	72.3		4.96	4.84		1.77	1.72		7	
10/6/2016	23:48	Cloudy	Middle	2.5	25.90	25.90	25.85	8.45	8.45	8.47	28.85	28.85	28.86	74.6	76.6	76.0	5.16	5.29	5.26	3.67	3.72	3.65	4	4.00
	23:49		Middle	2.5	25.80	25.80		8.50	8.49		28.87	28.87		76.4	76.3		5.29	5.29		3.63	3.59		4	
14/6/2016	0:15	Cloudy	Middle	2.5	28.40	28.40	28.40	8.38	8.38	8.39	23.98	23.98	23.98	72.8	72.6	73.0	4.94	4.96	4.96	1.75	1.94	1.93	2	2.00
	0:16		Middle	2.5	28.40	28.40		8.40	8.39		23.97	23.97		73.2	73.2		4.98	4.97		1.99	2.03		2	
16/6/2016	5:10	Cloudy	Middle	2.5	28.10	28.10	28.15	8.89	8.89	8.81	23.04	23.04	23.04	70.7	71.4	71.6	4.85	4.92	4.92	2.82	2.67	2.69	3	3.50
	5:11		Middle	2.5	28.20	28.20		8.72	8.72		23.04	23.04		72.0	72.1		4.95	4.95		2.69	2.58		4	
18/6/2016	17:05	Fine	Middle	2.5	27.40	27.40	27.50	8.37	8.37	8.40	27.19	27.19	27.17	60.7	60.4	60.5	4.12	4.10	4.10	6.54	6.17	6.19	6	5.00
	17:07		Middle	2.5	27.60	27.60		8.42	8.42		27.14	27.14		60.5	60.3		4.10	4.09		6.03	6.01		4	
20/6/2016	17:04	Sunny	Middle	3.5	28.70	28.70	28.70	8.68	8.68	8.72	25.15	25.15	25.15	83.0	84.6	87.8	5.58	5.69	5.87	8.77	8.77	8.79	8	8.00
	17:06		Middle	3.5	28.70	28.70		8.76	8.76		25.15	25.15		93.4	90.0		6.15	6.05		8.80	8.82		8	
22/6/2016	20:01	Fine	Middle	2.5	28.50	28.50	28.55	8.64	8.64	8.65	28.38	28.38	28.38	81.8	82.0	81.6	5.42	5.43	5.41	5.19	5.08	5.15	6	6.50
	20:02		Middle	2.5	28.60	28.60		8.65	8.65		28.38	28.38		82.0	80.7		5.43	5.34		5.05	5.26		7	
24/6/2016	20:03	Fine	Middle	2.5	29.60	29.60	29.60	8.53	8.53	8.59	28.25	28.25	28.25	74.5	75.2	74.7	4.83	4.90	4.88	3.35	3.37	3.28	6	7.00
	20:04		Middle	2.5	29.60	29.60		8.64	8.64		28.25	28.25		74.8	74.2		4.97	4.83		3.26	3.13		8	

Remarks:
Single underline denotes exceedance over Action Level.
Double underline denotes exceedance over Limit Level.



**Water Monitoring Result at P3 - APA
Mid-Flood Tide**

Date	Time	Weather Condition	Sampling Depth		Water Temperature			pH			Salinity			DO Saturation			DO			Turbidity			Suspended Solids	
					°C			-			ppt			%			mg/L			NTU			mg/L	
			m	Value	Average	Value	Average	Value	Average	Value	Average	Value	Average	Value	Average	Value	Average	Value	Average	Value	Average	Value	Average	Value
27/5/2016	21:12	Fine	Middle	2.0	25.20	25.20	25.20	8.49	8.49	8.49	30.82	30.82	30.82	72.6	71.6	71.2	4.78	4.71	4.69	4.79	5.01	5.03	4	4.50
	21:13		Middle	2.0	25.20	25.20		8.49	8.49		30.82	30.82		70.4	70.2		4.62	4.63		4.69	5.25		5.06	
30/5/2016	13:52	Fine	Middle	2.5	28.80	28.80	28.80	8.50	8.50	8.50	29.17	29.17	29.16	65.5	65.0	64.6	4.30	4.27	4.24	3.86	3.81	3.81	4	4.00
	13:54		Middle	2.5	28.80	28.80		8.50	8.50		29.14	29.14		64.3	63.4		4.22	4.16		4.24	3.77		3.79	
1/6/2016	15:04	Fine	Middle	3.0	29.10	29.10	29.15	8.57	8.57	8.58	26.97	26.97	26.97	76.9	77.0	76.5	5.09	5.09	5.06	2.59	2.55	2.55	4	3.50
	15:06		Middle	3.0	29.20	29.20		8.58	8.58		26.96	26.96		73.1	78.8		4.84	5.21		5.06	2.52		2.52	
3/6/2016	16:08	Fine	Middle	3.0	28.90	28.90	28.90	8.63	8.63	8.64	26.63	26.63	26.64	80.2	80.3	79.6	5.33	5.34	5.29	4.68	4.80	5.14	8	8.00
	16:10		Middle	3.0	28.90	28.90		8.64	8.64		26.64	26.64		78.9	79.1		5.24	5.26		5.29	5.70		5.36	
6/6/2016	20:34	Cloudy	Middle	3.0	26.80	26.80	26.70	8.56	8.56	8.57	29.84	29.84	29.85	71.1	71.4	71.3	4.80	4.82	4.81	2.01	1.98	1.96	3	2.50
	20:35		Middle	3.0	26.60	26.60		8.57	8.57		29.85	29.85		71.5	71.1		4.83	4.80		4.81	1.95		1.91	
8/6/2016	21:53	Cloudy	Middle	3.0	27.60	27.60	27.60	8.56	8.56	8.56	28.89	28.89	28.89	69.4	68.9	68.7	4.56	4.53	4.54	1.65	1.69	1.70	6	7.00
	21:54		Middle	3.0	27.60	27.60		8.56	8.56		28.89	28.89		67.9	68.5		4.56	4.50		4.54	1.74		1.71	
10/6/2016	23:53	Cloudy	Middle	2.5	26.10	26.10	26.05	8.55	8.55	8.55	29.15	29.15	29.15	73.4	74.4	73.6	5.05	5.13	5.07	2.10	2.08	2.16	3	3.00
	23:54		Middle	2.5	26.00	26.00		8.55	8.55		29.15	29.16		72.7	73.9		5.01	5.09		5.07	2.26		2.20	
14/6/2016	0:21	Cloudy	Middle	2.5	28.40	28.40	28.40	8.43	8.43	8.44	23.67	23.67	23.67	72.0	71.9	71.9	4.90	4.90	4.89	1.77	1.72	1.69	<2	<2
	0:22		Middle	2.5	28.40	28.40		8.44	8.44		23.67	23.67		71.5	72.0		4.86	4.90		4.89	1.65		1.60	
16/6/2016	5:16	Cloudy	Middle	2.5	28.00	28.00	28.05	8.56	8.56	8.58	22.54	22.54	22.54	70.2	70.5	70.4	4.84	4.86	4.86	2.25	2.38	2.29	3	4.00
	5:17		Middle	2.5	28.10	28.10		8.59	8.59		22.53	22.53		70.5	70.4		4.86	4.86		4.86	2.24		2.27	
18/6/2016	17:09	Fine	Middle	2.5	27.30	27.30	27.28	8.45	8.45	8.47	27.02	27.02	27.02	66.0	64.4	63.9	4.50	4.40	4.37	8.31	8.22	8.23	8	8.00
	17:11		Middle	2.5	27.20	27.30		8.48	8.48		27.01	27.01		63.2	62.1		63.9	4.32		4.24	4.37		8.25	
20/6/2016	17:08	Sunny	Middle	3.5	28.40	28.40	28.40	8.78	8.78	8.79	25.60	25.60	25.59	82.2	84.1	83.7	5.64	5.67	5.68	6.86	6.74	6.76	12	11.00
	17:10		Middle	3.5	28.40	28.40		8.80	8.80		25.58	25.58		85.5	82.8		83.7	5.77		5.64	5.68		6.71	
22/6/2016	20:09	Fine	Middle	2.5	28.30	28.30	28.40	8.67	8.67	8.68	28.53	28.54	28.53	76.7	76.9	77.7	5.08	5.10	5.15	5.39	5.14	5.22	7	7.00
	20:10		Middle	2.5	28.50	28.50		8.68	8.68		28.53	28.53		78.6	78.7		77.7	5.20		5.21	5.15		5.18	
24/6/2016	20:09	Fine	Middle	2.5	29.60	29.60	29.60	8.60	8.60	8.61	28.35	28.35	28.35	73.8	74.9	73.3	4.80	4.87	4.77	2.49	2.53	2.41	5	4.50
	20:10		Middle	2.5	29.60	29.60		8.61	8.61		28.35	28.35		72.7	71.8		73.3	4.73		4.67	4.77		2.34	

Remarks:
Single underline denotes exceedance over Action Level.
Double underline denotes exceedance over Limit Level.



**Water Monitoring Result at P4 - SOC
Mid-Flood Tide**

Date	Time	Weather Condition	Sampling Depth		Water Temperature			pH			Salinity			DO Saturation			DO			Turbidity			Suspended Solids	
					°C			-			ppt			%			mg/L			NTU			mg/L	
					Value	Average		Value	Average		Value	Average		Value	Average		Value	Average		Value	Average		Value	Average
27/5/2016	21:20	Fine	Middle	2.0	25.40	25.40	25.40	8.42	8.42	8.43	30.94	30.94	30.94	77.9	78.6	77.9	5.10	5.14	5.10	9.15	9.21	9.26	6	6.50
	21:21		Middle	2.0	25.40	25.40		8.43	8.43		30.93	30.93		78.0	77.0		5.10	5.04		5.10	9.36		9.31	
30/5/2016	13:56	Fine	Middle	2.5	28.60	28.60	28.60	8.51	8.51	8.52	29.19	29.19	29.20	64.4	62.6	62.6	4.29	4.13	4.14	4.14	4.02	4.16	4	4.00
	13:58		Middle	2.5	28.60	28.60		8.52	8.52		29.20	29.20		61.7	61.8		4.06	4.07		4.14	4.32		4.16	
1/6/2016	15:08	Fine	Middle	3.0	28.60	28.60	28.65	8.58	8.58	8.58	27.87	27.87	27.87	76.8	74.5	75.4	5.09	4.94	5.00	3.21	3.01	2.99	3	3.50
	15:10		Middle	3.0	28.70	28.70		8.58	8.58		27.87	27.87		73.4	76.7		4.87	5.09		5.00	2.88		2.87	
3/6/2016	16:12	Fine	Middle	3.0	28.70	28.70	28.70	8.63	8.63	8.63	27.46	27.46	27.46	72.7	77.2	74.4	4.83	4.86	4.87	4.15	4.21	4.21	6	6.00
	16:14		Middle	3.0	28.70	28.70		8.63	8.63		27.45	27.45		75.1	72.4		4.98	4.80		4.87	4.22		4.24	
6/6/2016	20:41	Cloudy	Middle	3.0	26.70	26.70	26.70	8.58	8.58	8.59	29.81	29.81	29.81	76.2	75.7	76.1	5.16	5.13	5.16	2.54	2.52	2.45	3	3.50
	20:42		Middle	3.0	26.70	26.70		8.59	8.59		29.81	29.81		76.6	76.0		5.19	5.15		5.16	2.41		2.33	
8/6/2016	22:01	Cloudy	Middle	3.0	27.10	27.10	27.15	8.55	8.55	8.56	29.46	29.46	29.46	68.7	69.0	68.8	4.63	4.65	4.64	2.61	2.59	2.56	8	8.00
	22:02		Middle	3.0	27.20	27.20		8.56	8.56		29.46	29.46		68.4	69.2		4.61	4.66		4.64	2.53		2.50	
10/6/2016	0:06	Cloudy	Middle	2.5	26.10	26.10	26.05	8.57	8.57	8.57	29.57	29.58	29.58	77.8	79.2	78.1	5.34	5.44	5.36	3.44	3.49	3.46	5	5.50
	0:07		Middle	2.5	26.00	26.00		8.57	8.57		29.58	29.57		78.1	77.4		5.34	5.33		5.36	3.51		3.38	
14/6/2016	0:27	Cloudy	Middle	2.5	28.40	28.40	28.40	8.45	8.45	8.45	23.83	23.83	23.83	75.7	76.3	75.9	5.15	5.20	5.17	2.23	2.18	2.17	<2	<2
	0:28		Middle	2.5	28.40	28.40		8.45	8.45		23.83	23.83		76.0	75.6		5.18	5.15		5.17	2.14		2.11	
16/6/2016	5:23	Cloudy	Middle	8.5	28.20	28.20	28.20	8.55	8.55	8.55	21.57	21.57	21.62	73.5	74.3	73.2	5.06	5.14	5.06	2.13	2.00	2.06	3	3.50
	5:24		Middle	28.4	28.20	28.20		8.55	8.55		21.67	21.67		72.3	72.6		5.00	5.02		5.06	2.03		2.07	
18/6/2016	17:13	Fine	Middle	2.5	27.10	27.10	27.10	8.49	8.49	8.50	27.00	27.00	27.04	63.4	65.2	63.8	4.33	4.46	4.36	8.75	8.52	8.54	8	9.00
	17:15		Middle	2.5	27.10	27.10		8.51	8.51		27.08	27.08		63.7	62.7		4.35	4.29		4.36	8.57		8.30	
20/6/2016	17:12	Sunny	Middle	3.5	28.20	28.20	28.25	8.79	8.79	8.79	26.25	26.25	26.25	68.5	74.6	72.4	4.61	5.02	4.87	8.85	8.72	8.73	6	6.00
	17:14		Middle	3.5	28.30	28.30		8.79	8.79		26.25	26.25		73.6	72.7		4.96	4.90		4.87	8.70		8.64	
22/6/2016	20:16	Fine	Middle	2.5	28.30	28.40	28.43	8.69	8.69	8.69	28.75	28.75	28.75	76.0	78.1	76.6	5.02	5.16	5.06	8.98	8.96	8.91	8	7.50
	20:17		Middle	2.5	28.50	28.50		8.69	8.69		28.75	28.75		78.0	74.2		5.15	4.90		5.06	8.86		8.84	
24/6/2016	20:17	Fine	Middle	2.5	29.80	29.80	29.80	8.55	8.55	8.56	28.88	28.88	28.88	72.4	75.2	73.8	4.68	4.87	4.79	4.76	4.60	4.71	5	5.50
	20:18		Middle	2.5	29.80	29.80		8.56	8.56		28.88	28.88		74.5	73.0		4.82	4.77		4.79	4.72		4.74	

Remarks:
Single underline denotes exceedance over Action Level.
Double underline denotes exceedance over Limit Level.



**Water Monitoring Result at P5 - WCT / RT / IT
Mid-Flood Tide**

Date	Time	Weather Condition	Sampling Depth		Water Temperature			pH			Salinity			DO Saturation		DO		Turbidity		Suspended Solids				
					°C			-			ppt			%		mg/L		NTU		mg/L				
			m	Value	Average	Value	Average	Value	Average	Value	Average	Value	Average	Value	Average	Value	Average	Value	Average	Value	Average			
27/5/2016	21:27	Fine	Middle	2.0	25.20	25.20	25.20	8.49	8.49	8.49	30.55	30.55	30.55	62.2	63.1	62.2	4.09	4.19	4.09	5.36	5.27	5.62	6	5.50
	21:28		Middle	2.0	25.20	25.20		8.49	8.49		30.55	30.55		62.2	61.1		4.06	4.00		5.92	5.94		5	
30/5/2016	14:00	Fine	Middle	2.5	28.60	28.60	28.45	8.53	8.53	8.53	28.99	28.99	29.20	65.9	64.9	65.1	4.36	4.29	4.31	4.86	4.84	4.84	5	4.00
	14:02		Middle	2.5	28.30	28.30		8.53	8.53		29.40	29.40		65.0	64.5		4.30	4.27		4.81	4.86		3	
1/6/2016	15:13	Fine	Middle	3.0	28.40	28.40	28.45	8.59	8.59	8.59	27.69	27.69	27.69	77.7	78.0	77.5	5.17	5.20	5.16	3.12	3.04	2.97	3	3.00
	15:14		Middle	3.0	28.50	28.50		8.59	8.59		27.69	27.69		77.2	77.0		5.14	5.13		2.97	2.76		3	
3/6/2016	16:16	Fine	Middle	3.0	28.40	28.40	28.40	8.64	8.64	8.64	27.52	27.52	27.52	74.5	76.0	75.3	4.97	5.07	5.02	5.03	5.12	5.07	7	6.50
	16:18		Middle	3.0	28.40	28.40		8.64	8.64		27.52	27.52		76.6	73.9		5.11	4.93		5.05	5.06		6	
6/6/2016	20:53	Cloudy	Middle	3.0	26.50	26.50	26.50	8.59	8.59	8.60	30.13	30.13	30.13	70.5	72.0	70.9	4.78	4.89	4.81	3.08	3.51	3.31	3	3.50
	20:54		Middle	3.0	26.50	26.50		8.60	8.60		30.13	30.13		70.8	70.2		4.79	4.77		3.39	3.24		4	
8/6/2016	22:09	Cloudy	Middle	3.0	26.90	26.90	26.93	8.37	8.37	8.38	29.25	29.25	29.25	72.9	73.0	72.9	4.83	4.94	4.91	4.15	4.03	4.09	10	9.50
	22:10		Middle	3.0	27.00	26.90		8.40	8.39		29.25	29.25		72.7	73.1		4.92	4.94		4.08	4.10		9	
10/6/2016	0:12	Cloudy	Middle	2.5	26.00	25.90	25.93	8.59	8.59	8.59	29.32	29.32	29.32	72.9	73.3	72.9	5.03	5.05	5.03	4.38	4.59	4.59	7	7.50
	0:13		Middle	2.5	25.90	25.90		8.59	8.59		29.32	29.32		72.1	73.1		4.98	5.04		4.72	4.65		8	
14/6/2016	0:32	Cloudy	Middle	2.5	28.50	28.50	28.50	8.46	8.46	8.46	23.86	23.86	23.86	71.4	71.6	71.0	4.85	4.86	4.82	2.58	2.80	2.58	3	3.00
	0:33		Middle	2.5	28.50	28.50		8.45	8.45		23.86	23.86		70.1	70.8		4.76	4.81		2.50	2.42		3	
16/6/2016	5:30	Cloudy	Middle	2.5	27.90	27.90	27.93	8.57	8.57	8.57	22.12	22.12	22.12	70.6	70.9	70.6	4.86	4.91	4.88	2.16	2.22	2.23	3	3.50
	5:31		Middle	2.5	28.00	27.90		8.57	8.57		22.11	22.11		71.0	70.0		4.91	4.84		2.20	2.32		4	
18/6/2016	17:17	Fine	Middle	2.5	27.00	27.00	27.00	8.53	8.53	8.54	27.00	27.00	27.00	65.4	64.3	64.4	4.49	4.41	4.42	7.89	7.60	7.79	10	9.00
	17:19		Middle	2.5	27.00	27.00		8.54	8.54		27.00	27.00		64.3	63.6		4.41	4.36		7.69	7.99		8	
20/6/2016	17:16	Sunny	Middle	3.5	28.10	28.10	28.00	8.78	8.78	8.76	26.79	26.79	26.84	72.1	72.1	71.2	4.87	4.87	4.81	8.49	8.53	8.55	9	9.00
	17:18		Middle	3.5	27.90	27.90		8.76	8.73		26.88	26.88		70.7	69.8		4.78	4.72		8.61	8.56		9	
22/6/2016	20:28	Fine	Middle	2.5	28.40	28.40	28.45	8.70	8.70	8.71	28.75	28.75	28.75	82.3	83.9	82.7	5.44	5.54	5.47	6.37	6.28	6.40	8	8.00
	20:29		Middle	2.5	28.50	28.50		8.71	8.71		28.75	28.75		82.3	82.2		5.44	5.44		6.42	6.52		8	
24/6/2016	20:23	Fine	Middle	2.5	29.90	29.90	29.90	8.62	8.62	8.62	28.90	28.90	28.91	72.1	72.0	71.6	4.65	4.65	4.61	3.37	3.15	3.13	5	5.00
	20:24		Middle	2.5	29.90	29.90		8.61	8.61		28.92	28.92		71.3	71.0		4.60	4.53		3.03	2.95		5	

Remarks:
Single underline denotes exceedance over Action Level.
Double underline denotes exceedance over Limit Level.



**Water Monitoring Result at RW21-P789 - Sun Hung Kai Centre
Mid-Flood Tide**

Date	Time	Weather Condition	Sampling Depth		Water Temperature			pH			Salinity			DO Saturation		DO		Turbidity		Suspended Solids				
					°C			-			ppt			%		mg/L		NTU		mg/L				
			m	Value	Average	Value	Average	Value	Average	Value	Average	Value	Average	Value	Average	Value	Average	Value	Average	Value	Average			
27/5/2016	20:40	Fine	Middle	3.0	26.30	26.30	26.30	8.32	8.32	8.35	31.03	31.03	31.03	71.9	72.6	72.7	4.64	4.68	4.68	6.05	5.95	5.91	8	8.00
	20:41		Middle	3.0	26.30	26.30		8.37	8.37		31.03	31.03		73.6	72.8		4.74	4.65		5.86	5.77		8	
30/5/2016	10:54	Fine	Middle	3.5	27.90	27.90	28.00	8.41	8.41	8.44	28.36	28.35	28.31	63.5	63.5	62.9	4.25	4.25	4.21	4.94	4.48	4.52	5	5.00
	10:56		Middle	3.5	28.10	28.10		8.47	8.47		28.27	28.27		63.0	61.5		4.22	4.12		4.34	4.33		5	
1/6/2016	15:15	Fine	Middle	4.0	28.40	28.40	28.40	8.54	8.54	8.57	27.15	27.15	27.15	83.3	83.3	82.7	5.37	5.37	5.43	6.46	6.44	6.43	14	14.50
	15:17		Middle	4.0	28.40	28.40		8.59	8.59		27.14	27.14		82.2	82.1		5.49	5.49		6.43	6.40		15	
3/6/2016	16:35	Fine	Middle	3.5	28.30	28.30	28.30	8.56	8.56	8.60	26.87	26.87	26.87	83.8	87.9	85.0	5.62	5.77	5.67	3.98	3.98	3.97	7	7.00
	16:37		Middle	3.5	28.30	28.30		8.63	8.63		26.87	26.87		83.9	84.4		5.63	5.67		3.97	3.93		7	
6/6/2016	18:25	Cloudy	Middle	3.0	27.00	27.00	27.05	8.42	8.42	8.43	29.75	29.75	29.76	76.0	75.8	76.0	5.12	5.10	5.12	2.97	2.98	3.01	4	4.00
	18:26		Middle	3.0	27.10	27.10		8.43	8.43		29.77	29.77		76.1	76.1		5.12	5.12		3.06	3.03		4	
8/6/2016	18:38	Cloudy	Middle	3.0	27.60	27.60	27.60	8.51	8.51	8.52	28.46	28.46	28.46	75.7	76.3	75.7	5.09	5.13	5.09	4.30	4.23	4.22	9	8.50
	18:39		Middle	3.0	27.60	27.60		8.52	8.52		28.46	28.46		76.1	74.8		5.12	5.03		4.19	4.17		8	
10/6/2016	20:50	Cloudy	Middle	3.0	26.60	26.60	26.60	8.59	8.59	8.59	28.73	28.73	28.73	77.5	78.9	78.2	5.30	5.40	5.35	4.65	4.52	4.49	4	4.00
	20:51		Middle	3.0	26.60	26.60		8.59	8.59		28.73	28.73		78.5	78.0		5.37	5.33		4.50	4.28		4	
14/6/2016	22:39	Cloudy	Middle	3.5	28.00	28.00	28.00	8.33	8.33	8.34	24.51	24.51	24.51	71.2	71.9	71.5	4.86	4.90	4.87	2.24	2.29	2.49	2	2.00
	22:40		Middle	3.5	28.00	28.00		8.34	8.34		24.51	24.51		72.0	70.7		4.91	4.82		2.68	2.74		2	
16/6/2016	4:00	Cloudy	Middle	3.5	28.40	28.40	28.45	8.41	8.41	8.41	23.08	23.08	23.09	77.0	78.3	77.3	5.26	5.35	5.28	1.91	1.93	1.96	2	2.50
	4:01		Middle	3.5	28.50	28.50		8.41	8.41		23.09	23.09		76.8	76.9		5.24	5.25		1.99	2.02		3	
18/6/2016	17:34	Fine	Middle	3.5	26.90	26.90	26.90	8.47	8.47	8.49	26.80	26.80	26.80	55.8	54.1	53.9	3.83	3.72	3.70	6.44	6.30	6.32	7	8.00
	17:36		Middle	3.5	26.90	26.90		8.50	8.50		26.79	26.79		53.2	52.3		3.65	3.59		6.27	6.28		9	
20/6/2016	18:23	Sunny	Middle	3.0	28.40	28.40	28.45	8.64	8.64	8.65	26.32	26.63	26.39	89.1	89.9	89.8	5.95	6.01	6.00	5.60	5.65	5.64	9	9.50
	18:24		Middle	3.0	28.60	28.40		8.66	8.66		26.31	26.31		89.9	90.4		6.01	6.04		5.70	5.62		10	
22/6/2016	17:55	Fine	Middle	3.0	28.70	28.70	28.70	8.64	8.64	8.65	28.01	28.01	28.01	94.9	97.8	96.0	6.28	6.47	6.35	7.55	7.14	7.28	8	7.50
	17:56		Middle	3.0	28.70	28.70		8.66	8.66		28.01	28.01		97.4	94.0		6.44	6.21		7.33	7.08		7	
24/6/2016	19:32	Fine	Middle	3.0	28.80	28.80	28.85	8.64	8.64	8.65	28.69	28.69	28.69	78.2	77.0	77.6	5.14	5.05	5.10	2.95	2.92	3.03	7	7.50
	19:33		Middle	3.0	28.90	28.90		8.65	8.65		28.69	28.69		77.8	77.3		5.12	5.08		3.08	3.15		8	

Remarks:
Single underline denotes exceedance over Action Level.
Double underline denotes exceedance over Limit Level.



**Water Monitoring Result at WSD19 - Sheung Wan
Mid-Flood Tide**

Date	Time	Weather Condition	Sampling Depth		Water Temperature			pH			Salinity			DO Saturation		DO		Turbidity		Suspended Solids				
					°C			-			ppt			%		mg/L		NTU		mg/L				
			m		Value	Average	Value	Average	Value	Average	Value	Average	Value	Average	Value	Average	Value	Average	Value	Average	Value	Average		
27/5/2016	22:00	Fine	Middle	3.0	26.40	26.40	26.35	8.25	8.25	8.29	31.11	31.11	31.12	75.0	77.0	76.9	4.82	4.96	4.95	5.33	5.47	5.48	10	9.50
	22:01		Middle	3.0	26.30	26.30		8.33	8.33		31.12	31.12		78.2	77.3		5.04	4.98		5.60	5.51		9	
30/5/2016	10:13	Fine	Middle	3.5	28.20	28.20	28.30	8.43	8.43	8.45	27.17	27.17	27.19	64.0	63.9	63.5	4.29	4.28	4.25	5.88	5.59	5.78	5	5.50
	10:15		Middle	3.5	28.40	28.40		8.46	8.46		27.20	27.20		63.6	62.4		4.26	4.18		5.89	5.76		6	
1/6/2016	14:09	Fine	Middle	3.5	30.00	30.00	30.10	8.49	8.49	8.51	25.87	25.87	25.88	81.1	78.4	77.4	5.31	5.13	5.15	4.32	4.28	4.28	6	5.50
	14:11		Middle	3.5	30.20	30.20		8.52	8.52		25.88	25.88		77.8	72.3		5.09	5.05		4.24	4.28		5	
3/6/2016	15:09	Fine	Middle	3.5	29.50	29.50	29.70	8.47	8.47	8.50	25.78	25.78	25.78	79.3	79.6	79.1	5.25	5.15	5.19	4.68	4.62	4.61	6	6.50
	15:11		Middle	3.5	29.90	29.90		8.53	8.53		25.78	25.78		78.9	78.4		5.20	5.16		4.59	4.55		7	
6/6/2016	19:30	Cloudy	Middle	2.5	26.80	26.80	26.80	8.35	8.35	8.37	30.01	30.01	30.02	73.0	73.4	73.2	4.93	4.97	4.94	2.67	2.82	2.81	4	4.50
	19:31		Middle	2.5	26.80	26.80		8.39	8.39		30.02	30.02		73.0	73.2		4.93	4.94		2.85	2.90		5	
8/6/2016	19:40	Cloudy	Middle	3.0	27.50	27.50	27.55	8.43	8.43	8.45	28.39	28.39	28.39	78.1	78.9	78.2	5.26	5.31	5.27	5.60	5.85	5.76	9	9.00
	19:41		Middle	3.0	27.60	27.60		8.46	8.46		28.39	28.39		78.7	77.2		5.30	5.20		5.90	5.70		9	
10/6/2016	21:35	Cloudy	Middle	3.0	26.60	26.60	26.60	8.57	8.57	8.57	28.83	28.83	28.70	76.2	77.3	77.3	5.21	5.28	5.28	4.16	4.11	4.09	5	5.00
	21:36		Middle	3.0	26.60	26.60		8.57	8.57		28.83	28.83		77.7	77.9		5.31	5.33		4.06	4.02		5	
14/6/2016	23:35	Cloudy	Middle	3.5	28.40	28.40	28.40	8.37	8.37	8.38	23.53	23.53	23.54	76.3	77.8	77.2	5.20	5.31	5.27	3.22	3.24	3.41	4	3.50
	23:36		Middle	3.5	28.40	28.40		8.39	8.39		23.54	23.54		77.4	77.3		5.28	5.28		3.66	3.50		3	
16/6/2016	5:55	Cloudy	Middle	3.5	28.20	28.20	28.25	8.40	8.40	8.41	21.37	21.37	21.37	78.9	78.8	78.5	5.48	5.44	5.43	2.52	2.50	2.40	3	3.50
	5:56		Middle	3.5	28.30	28.30		8.42	8.42		21.36	21.36		78.2	78.2		5.40	5.40		2.24	2.33		4	
18/6/2016	16:23	Fine	Middle	3.5	27.20	27.20	27.25	8.35	8.35	8.38	26.24	26.24	26.23	61.2	60.2	59.8	4.29	4.12	4.12	5.89	5.91	5.93	4	4.00
	16:25		Middle	3.5	27.30	27.30		8.40	8.40		26.22	26.22		59.4	58.5		4.07	4.00		5.93	5.98		4	
20/6/2016	19:20	Sunny	Middle	3.0	28.60	28.60	28.65	8.53	8.53	8.57	26.58	26.58	26.59	79.6	79.8	79.5	5.32	5.33	5.31	6.96	6.99	7.02	7	7.00
	19:21		Middle	3.0	28.70	28.70		8.60	8.60		26.60	26.60		79.4	79.0		5.31	5.27		7.03	7.10		7	
22/6/2016	18:45	Fine	Middle	3.0	28.30	28.30	28.40	8.51	8.51	8.53	27.98	27.98	27.98	80.9	82.0	81.4	5.37	5.44	5.40	8.04	7.83	7.86	10	10.50
	18:46		Middle	3.0	28.50	28.50		8.54	8.54		27.98	27.98		82.1	80.4		5.45	5.34		7.80	7.78		11	
24/6/2016	20:48	Fine	Middle	3.0	29.50	29.50	29.50	8.59	8.59	8.59	28.68	28.68	29.18	79.3	78.5	78.8	5.16	5.40	5.18	3.85	3.77	3.61	8	7.50
	20:49		Middle	3.0	29.50	29.50		8.58	8.58		29.68	29.68		79.0	78.3		5.14	5.03		3.39	3.44		7	

Remarks:
Single underline denotes exceedance over Action Level.
Double underline denotes exceedance over Limit Level.



**Water Monitoring Result at C7 - Windsor House
Mid-Ebb Tide**

Date	Time	Weather Condition	Sampling Depth		Water Temperature			pH			Salinity		DO Saturation		DO		Turbidity		Suspended Solids					
					°C			-			ppt		%		mg/L		NTU		mg/L					
					Value	Average		Value	Average		Value	Average	Value	Average	Value	Average	Value	Average	Value	Average				
27/5/2016	-	Strong Wind Signal No. 3	Middle	-	-	-	#DIV/0!	-	-	#DIV/0!	-	-	#DIV/0!	-	-	#DIV/0!	-	-	#DIV/0!	-	#DIV/0!			
	-		Middle	-	-	-	#DIV/0!	-	-	#DIV/0!	-	-	#DIV/0!	-	-	#DIV/0!	-	-	#DIV/0!	-	#DIV/0!			
30/5/2016	18:25	Cloudy	Middle	-	28.50	28.50	28.53	8.55	8.54	8.54	28.70	28.70	28.70	81.0	81.3	80.7	5.35	5.37	5.33	4.78	4.76	4.62	2	2.00
	18:26		Middle	-	28.50	28.60	28.53	8.54	8.54	8.54	28.70	28.70	28.70	80.0	80.6	80.7	5.28	5.32	5.33	4.48	4.46	4.62	2	2.00
1/6/2016	10:14	Fine	Middle	-	28.60	28.60	28.55	8.40	8.40	8.43	27.21	27.21	27.22	68.1	71.4	68.9	4.58	4.76	4.60	3.73	3.75	3.47	3	2.50
	10:16		Middle	-	28.50	28.50	28.55	8.46	8.46	8.43	27.22	27.22	27.22	68.8	67.2	68.9	4.58	4.48	4.60	3.24	3.14	3.47	2	2.50
3/6/2016	11:50	Fine	Middle	-	29.00	29.00	29.00	8.40	8.40	8.44	26.25	26.25	26.25	74.7	74.9	73.7	4.97	4.98	4.90	3.90	3.99	4.00	3	3.50
	11:52		Middle	-	29.00	29.00	29.00	8.47	8.47	8.44	26.25	26.25	26.25	72.6	72.4	73.7	4.83	4.82	4.90	4.03	4.08	4.00	4	3.50
6/6/2016	-	Amber Rainstorm Warning Signal	Middle	-	-	-	#DIV/0!	-	-	#DIV/0!	-	-	#DIV/0!	-	-	#DIV/0!	-	-	#DIV/0!	-	-	#DIV/0!	-	#DIV/0!
	-		Middle	-	-	-	#DIV/0!	-	-	#DIV/0!	-	-	#DIV/0!	-	-	#DIV/0!	-	-	#DIV/0!	-	-	#DIV/0!	-	#DIV/0!
8/6/2016	11:36	Cloudy	Middle	-	28.10	28.10	28.20	8.34	8.34	8.35	29.72	29.72	29.73	68.3	68.5	68.5	4.52	4.53	4.53	4.46	4.42	4.42	5	4.50
	11:38		Middle	-	28.30	28.30	28.20	8.36	8.36	8.35	29.73	29.73	29.73	69.1	68.1	68.5	4.56	4.50	4.53	4.41	4.40	4.42	4	4.50
10/6/2016	17:20	Fine	Middle	-	27.40	27.47	27.47	8.26	8.26	8.31	29.78	29.70	29.76	71.5	71.2	71.0	4.79	4.76	4.75	5.65	5.63	5.63	3	3.00
	17:22		Middle	-	27.50	27.50	27.47	8.35	8.35	8.31	29.77	29.77	29.76	70.1	71.0	71.0	4.69	4.75	4.75	5.63	5.62	5.63	3	3.00
13/6/2016	17:45	Fine	Middle	-	28.00	28.00	28.00	8.36	8.36	8.36	25.49	25.49	25.49	72.8	72.9	72.7	4.93	4.94	4.92	3.03	2.91	2.93	3	3.00
	17:46		Middle	-	28.00	28.00	28.00	8.35	8.35	8.36	25.49	25.49	25.49	72.5	72.5	72.7	4.91	4.91	4.92	2.94	2.84	2.93	3	3.00
16/6/2016	11:45	Fine	Middle	-	28.50	28.50	28.50	8.21	8.21	8.22	20.77	20.77	20.77	74.9	74.4	74.6	5.18	5.14	5.15	4.42	4.31	4.34	4	4.00
	11:47		Middle	-	28.50	28.50	28.50	8.23	8.23	8.22	20.77	20.77	20.77	74.9	74.1	74.6	5.17	5.12	5.15	4.31	4.32	4.34	4	4.00
18/6/2016	12:31	Fine	Middle	-	27.30	27.30	27.30	8.21	8.21	8.25	26.05	26.05	26.06	63.4	62.1	62.8	4.34	4.25	4.30	9.52	9.46	9.47	35	<u>19.50</u>
	12:33		Middle	-	27.30	27.30	27.30	8.28	8.28	8.25	26.06	26.06	26.06	62.6	63.1	62.8	4.29	4.32	4.30	9.45	9.45	9.47	4	<u>19.50</u>
20/6/2016	12:20	Sunny	Middle	-	28.70	28.70	28.85	8.61	8.61	8.63	27.28	27.28	27.28	86.8	86.3	87.0	5.75	5.72	5.76	8.86	8.55	8.63	11	10.50
	12:22		Middle	-	29.00	29.00	28.85	8.65	8.65	8.63	27.28	27.28	27.28	87.9	86.9	87.0	5.82	5.76	5.76	8.55	8.55	8.63	10	10.50
22/6/2016	11:45	Sunny	Middle	-	28.10	28.10	28.25	8.39	8.39	8.43	29.28	29.28	29.27	75.9	75.6	75.5	5.03	4.98	4.99	6.70	6.70	6.70	6	6.50
	11:47		Middle	-	28.40	28.40	28.25	8.47	8.47	8.43	29.26	29.26	29.27	75.8	74.8	75.5	5.02	4.94	4.99	6.70	6.71	6.70	7	6.50
24/6/2016	11:50	Fine	Middle	-	28.50	28.50	28.40	8.34	8.34	8.39	29.75	29.75	29.74	77.6	78.1	77.6	5.09	5.12	5.07	16.20	16.19	<u>16.18</u>	8	<u>20.00</u>
	11:52		Middle	-	28.30	28.30	28.40	8.43	8.43	8.39	29.73	29.73	29.74	77.9	76.8	77.6	5.10	4.96	5.07	16.15	16.16	<u>16.18</u>	32	<u>20.00</u>

Remarks:
Single underline denotes exceedance over Action Level.
Double underline denotes exceedance over Limit Level.



**Water Monitoring Result at C1 - HKCEC
Mid-Ebb Tide**

Date	Time	Weather Condition	Sampling Depth		Water Temperature			pH			Salinity		DO Saturation		DO		Turbidity		Suspended Solids					
					°C			-			ppt		%		mg/L		NTU		mg/L					
					Value	Average		Value	Average		Value	Average	Value	Average	Value	Average	Value	Average	Value	Average				
27/5/2016	-	Strong Wind Signal No. 3	Middle	-	-	-	#DIV/0!	-	-	#DIV/0!	-	-	#DIV/0!	-	-	#DIV/0!	-	-	#DIV/0!	-	#DIV/0!			
	-		Middle	-	-	-	#DIV/0!	-	-	#DIV/0!	-	-	#DIV/0!	-	-	#DIV/0!	-	-	#DIV/0!	-	#DIV/0!			
30/5/2016	16:52	Cloudy	Middle	2.5	28.50	28.50	28.55	8.66	8.66	8.66	27.92	27.92	27.92	68.6	68.5	68.3	4.55	4.55	4.54	3.99	4.07	4.00	3	3.50
	16:54		Middle	2.5	28.60	28.60	28.55	8.66	8.66	8.66	27.92	27.92	27.92	68.6	67.6	68.3	4.56	4.49	4.54	4.04	3.89	4.00	4	3.50
1/6/2016	9:20	Fine	Middle	2.5	27.80	27.80	27.75	8.63	8.63	8.64	25.85	25.85	25.87	76.2	77.4	77.7	5.19	5.24	5.28	3.24	3.01	3.00	4	4.50
	9:22		Middle	2.5	27.70	27.70	27.75	8.64	8.64	8.64	25.88	25.88	25.87	78.5	78.5	77.7	5.35	5.34	5.28	2.89	2.87	3.00	5	4.50
3/6/2016	11:10	Fine	Middle	3.0	28.40	28.40	28.40	8.67	8.67	8.68	25.73	25.73	25.74	79.7	79.7	80.1	5.37	5.37	5.39	4.68	4.40	4.48	5	4.00
	11:12		Middle	3.0	28.40	28.40	28.40	8.68	8.68	8.68	25.74	25.74	25.74	79.7	81.1	80.1	5.37	5.46	5.39	4.45	4.40	4.48	3	4.00
6/6/2016	-	Amber Rainstorm Warning Signal	Middle	-	-	-	#DIV/0!	-	-	#DIV/0!	-	-	#DIV/0!	-	-	#DIV/0!	-	-	#DIV/0!	-	-	#DIV/0!	-	#DIV/0!
	-		Middle	-	-	-	#DIV/0!	-	-	#DIV/0!	-	-	#DIV/0!	-	-	#DIV/0!	-	-	#DIV/0!	-	-	#DIV/0!	-	#DIV/0!
8/6/2016	15:34	Cloudy	Middle	2.5	27.10	27.10	27.15	8.54	8.54	8.54	28.56	28.56	28.61	58.2	57.6	57.2	3.94	3.90	3.87	5.67	5.49	5.55	9	9.50
	15:36		Middle	2.5	27.20	27.20	27.15	8.54	8.54	8.54	28.65	28.65	28.61	56.9	56.1	57.2	3.85	3.80	3.87	5.48	5.55	5.55	10	9.50
10/6/2016	16:27	Fine	Middle	2.5	27.20	27.20	27.25	8.54	8.54	8.54	29.03	29.03	29.03	69.1	68.0	67.2	4.66	4.59	4.53	2.64	2.64	2.59	<2	2.00
	16:29		Middle	2.5	27.30	27.30	27.25	8.54	8.54	8.54	29.02	29.02	29.03	66.4	65.2	67.2	4.48	4.40	4.53	2.55	2.53	2.59	2	2.00
13/6/2016	16:42	Fine	Middle	3.5	27.90	27.90	27.95	8.41	8.41	8.41	25.09	25.09	25.10	71.0	69.9	69.8	4.83	4.76	4.76	2.74	2.65	2.67	4	4.00
	16:44		Middle	3.5	28.00	28.00	27.95	8.41	8.41	8.41	25.10	25.10	25.10	69.3	69.1	69.8	4.72	4.71	4.76	2.64	2.64	2.67	4	4.00
16/6/2016	11:05	Fine	Middle	3.0	28.30	28.30	28.30	8.58	8.58	8.59	20.18	20.18	20.19	78.4	78.2	77.9	5.46	5.44	5.42	4.15	4.03	4.05	4	4.00
	11:07		Middle	3.0	28.30	28.30	28.30	8.59	8.59	8.59	20.19	20.19	20.19	77.7	77.1	77.9	5.41	5.37	5.42	4.01	4.00	4.05	4	4.00
18/6/2016	11:50	Fine	Middle	2.5	27.10	27.10	27.15	8.55	8.55	8.56	25.73	25.73	25.73	66.9	66.7	65.4	4.60	4.59	4.50	5.35	5.25	5.26	4	4.00
	11:52		Middle	2.5	27.20	27.20	27.15	8.56	8.56	8.56	25.72	25.72	25.73	65.3	62.6	65.4	4.49	4.31	4.50	5.23	5.22	5.26	4	4.00
20/6/2016	15:03	Sunny	Middle	2.5	29.10	29.10	29.10	9.01	9.01	9.02	23.45	23.45	23.45	91.2	90.2	89.5	6.16	6.09	6.05	7.97	7.98	7.95	8	8.50
	15:05		Middle	2.5	29.10	29.10	29.10	9.02	9.02	9.02	23.44	23.44	23.45	88.9	87.8	89.5	6.00	5.93	6.05	7.94	7.91	7.95	9	8.50
22/6/2016	15:03	Sunny	Middle	2.5	27.60	27.60	27.65	8.69	8.69	8.69	28.04	28.04	28.05	74.5	76.7	75.5	5.02	5.17	5.09	5.75	5.55	5.71	6	7.00
	15:04		Middle	2.5	27.70	27.70	27.65	8.69	8.69	8.69	28.05	28.05	28.05	76.5	74.3	75.5	5.15	5.00	5.09	5.76	5.77	5.71	8	7.00
24/6/2016	15:53	Fine	Middle	3.5	27.30	27.30	27.30	8.68	8.68	8.69	28.89	28.89	28.89	83.4	82.4	82.6	5.62	5.56	5.57	5.31	5.57	5.43	4	4.00
	15:55		Middle	3.5	27.30	27.30	27.30	8.69	8.69	8.69	28.89	28.89	28.89	82.3	82.1	82.6	5.55	5.54	5.57	5.47	5.35	5.43	4	4.00

Remarks:
Single underline denotes exceedance over Action Level.
Double underline denotes exceedance over Limit Level.



**Water Monitoring Result at P1 - HKCEC Phase I
Mid-Ebb Tide**

Date	Time	Weather Condition	Sampling Depth		Water Temperature			pH			Salinity		DO Saturation		DO		Turbidity		Suspended Solids					
					°C			-			ppt		%		mg/L		NTU		mg/L					
					Value	Average		Value	Average		Value	Average	Value	Average	Value	Average	Value	Average	Value	Average				
27/5/2016	-	Strong Wind Signal No. 3	Middle	-	-	-	#DIV/0!	-	-	#DIV/0!	-	-	#DIV/0!	-	-	#DIV/0!	-	-	#DIV/0!	-	-			
	-		Middle	-	-	-		-	-		-	-		-	-		-	-		-	-	-	-	-
30/5/2016	16:36	Cloudy	Middle	2.5	29.00	29.00	29.10	8.47	8.47	8.50	27.91	27.91	27.91	72.9	73.5	72.7	4.79	4.83	4.78	4.15	4.15	4.15	5	5.00
	16:38		Middle	2.5	29.20	29.20		8.53	8.53		27.90	27.90		73.1	71.3		4.81	4.69		4.15	4.15		5	
1/6/2016	9:00	Fine	Middle	2.5	28.10	28.10	28.15	8.52	8.52	8.55	25.88	25.88	25.88	82.5	82.4	81.7	5.58	5.57	5.52	3.14	3.04	3.06	3	2.50
	9:02		Middle	2.5	28.20	28.20		8.58	8.58		25.88	25.88		80.7	81.1		5.45	5.48		3.01	3.03		2	
3/6/2016	10:50	Fine	Middle	3.0	29.10	29.10	29.20	8.52	8.52	8.56	25.82	25.82	25.82	81.9	82.0	81.7	5.44	5.44	5.43	4.82	4.84	4.56	4	4.00
	10:52		Middle	3.0	29.30	29.30		8.60	8.60		25.82	25.82		81.7	81.3		5.42	5.40		4.27	4.29		4	
6/6/2016	-	Amber Rainstorm Warning Signal	Middle	-	-	-	#DIV/0!	-	-	#DIV/0!	-	-	#DIV/0!	-	-	#DIV/0!	-	-	#DIV/0!	-	-	#DIV/0!	-	#DIV/0!
	-		Middle	-	-	-		-	-		-	-		-	-		-	-		-	-		-	
8/6/2016	15:18	Cloudy	Middle	2.5	27.70	27.70	27.90	8.44	8.44	8.46	28.64	28.64	28.61	62.2	62.3	61.2	4.16	4.16	4.08	2.76	2.81	2.78	4	4.50
	15:20		Middle	2.5	28.10	28.10		8.47	8.47		28.57	28.57		60.8	59.3		4.06	3.95		2.78	2.76		5	
10/6/2016	16:11	Fine	Middle	2.5	28.20	28.20	28.25	8.40	8.40	8.42	29.06	29.06	29.04	61.8	63.4	63.6	4.10	4.20	4.22	3.53	3.56	3.60	<2	<2
	16:13		Middle	2.5	28.30	28.30		8.44	8.44		29.02	29.02		65.2	63.8		4.33	4.23		3.60	3.70		<2	
13/6/2016	16:26	Fine	Middle	3.5	29.40	29.40	29.60	8.32	8.32	8.33	25.41	25.41	25.41	73.5	69.4	71.9	4.86	4.58	4.75	3.59	3.62	3.62	4	4.50
	16:28		Middle	3.5	29.80	29.80		8.34	8.34		25.41	25.41		72.4	72.2		4.78	4.77		3.63	3.63		5	
16/6/2016	10:45	Fine	Middle	3.0	28.90	28.90	29.00	8.34	8.34	8.39	20.46	20.46	20.46	79.1	79.7	79.1	5.44	5.47	5.43	4.15	4.03	4.05	4	4.00
	10:47		Middle	3.0	29.10	29.10		8.44	8.44		20.46	20.46		79.8	77.7		5.48	5.33		4.02	4.01		4	
18/6/2016	11:34	Fine	Middle	2.5	28.30	28.30	28.35	8.40	8.40	8.42	26.34	26.34	26.35	62.5	60.5	59.4	4.19	4.06	3.98	5.34	5.30	5.31	4	3.50
	11:36		Middle	2.5	28.40	28.40		8.44	8.44		26.35	26.35		57.7	56.7		3.88	3.80		5.30	5.31		3	
20/6/2016	14:47	Sunny	Middle	2.5	29.80	29.80	29.85	8.91	8.91	8.91	23.03	23.03	23.01	111.3	116.2	112.1	7.43	7.67	7.46	6.70	6.54	6.58	10	10.50
	14:49		Middle	2.5	29.90	29.90		8.90	8.90		22.99	22.99		111.1	109.9		7.41	7.32		6.56	6.51		11	
22/6/2016	14:46	Sunny	Middle	2.5	28.70	28.70	28.90	8.58	8.58	8.61	28.28	28.28	28.26	82.0	82.8	81.7	5.40	5.45	5.38	6.45	6.43	6.49	8	8.50
	14:48		Middle	2.5	29.10	29.10		8.63	8.63		28.23	28.23		82.0	80.0		5.40	5.26		6.53	6.56		9	
24/6/2016	15:37	Fine	Middle	3.5	27.80	27.80	27.95	8.53	8.53	8.55	29.42	28.42	28.66	79.2	77.7	77.4	5.26	5.16	5.15	6.36	5.82	5.97	4	4.00
	15:39		Middle	3.5	28.10	28.10		8.57	8.57		28.40	28.40		76.4	76.1		5.07	5.09		5.88	5.82		4	

Remarks:
Single underline denotes exceedance over Action Level.
Double underline denotes exceedance over Limit Level.



**Water Monitoring Result at P3 - APA
Mid-Ebb Tide**

Date	Time	Weather Condition	Sampling Depth		Water Temperature			pH			Salinity		DO Saturation		DO		Turbidity		Suspended Solids					
					°C			-			ppt		%		mg/L		NTU		mg/L					
					Value	Average		Value	Average		Value	Average	Value	Average	Value	Average	Value	Average	Value	Average	Value	Average		
27/5/2016	-	Strong Wind Signal No. 3	Middle	-	-	-	#DIV/0!	-	-	#DIV/0!	-	-	#DIV/0!	-	-	#DIV/0!	-	-	#DIV/0!	-	-	#DIV/0!		
	-		Middle	-	-	-		-	-		-	-		-	-		-	-		-	-		-	-
30/5/2016	16:40	Cloudy	Middle	2.5	28.80	28.80	28.80	8.59	8.59	8.61	27.82	27.82	27.81	67.3	71.8	70.0	4.46	4.76	4.64	4.12	4.27	4.26	5	4.50
	16:42		Middle	2.5	28.80	28.80		8.62	8.62		27.80	27.80		71.2	69.8		4.72	4.62		4.30	4.35		4	
1/6/2016	9:05	Fine	Middle	2.5	27.80	27.80	27.80	8.59	8.59	8.60	25.84	25.84	25.84	79.3	79.1	78.8	5.39	5.38	5.36	3.49	3.69	3.63	3	3.00
	9:07		Middle	2.5	27.80	27.80		8.61	8.61		25.84	25.84		78.1	78.6		5.31	5.34		3.70	3.65		3	
3/6/2016	10:55	Fine	Middle	3.0	28.80	28.80	28.80	8.62	8.62	8.63	25.84	25.84	25.84	81.5	80.7	81.0	5.46	5.40	5.42	4.40	4.38	4.39	4	4.00
	10:57		Middle	3.0	28.80	28.80		8.64	8.64		25.84	25.84		81.2	80.4		5.43	5.38		4.37	4.42		4	
6/6/2016	-	Amber Rainstorm Warning Signal	Middle	-	-	-	#DIV/0!	-	-	#DIV/0!	-	-	#DIV/0!	-	-	#DIV/0!	-	-	#DIV/0!	-	-	#DIV/0!	-	#DIV/0!
	-		Middle	-	-	-		-	-		-	-		-	-		-	-		-	-		-	
8/6/2016	15:22	Cloudy	Middle	2.5	27.30	27.30	27.35	8.49	8.49	8.50	28.47	28.47	28.45	63.2	63.7	62.8	4.27	4.30	4.24	3.64	3.64	3.67	5	5.50
	15:24		Middle	2.5	27.40	27.40		8.51	8.51		28.43	28.43		62.4	62.0		4.21	4.18		3.70	3.70		6	
10/6/2016	16:15	Fine	Middle	2.5	27.60	27.60	27.60	8.47	8.47	8.49	28.93	28.93	28.92	72.0	70.6	71.4	4.84	4.74	4.79	2.76	2.68	2.74	<2	2.00
	16:17		Middle	2.5	27.60	27.60		8.50	8.50		28.91	28.91		71.9	71.1		4.80	4.77		2.71	2.82		2	
13/6/2016	16:30	Fine	Middle	3.5	28.50	28.50	28.60	8.36	8.36	8.37	25.32	25.32	25.32	73.8	71.3	72.1	4.96	4.80	4.73	2.45	2.48	2.49	2	3.00
	16:32		Middle	3.5	28.70	28.70		8.37	8.37		25.32	25.32		71.1	72.3		4.28	4.86		2.50	2.51		4	
16/6/2016	10:50	Fine	Middle	3.0	28.50	28.50	28.50	8.48	8.48	8.50	20.20	20.20	20.20	78.8	78.4	78.8	5.47	5.44	5.47	4.00	4.03	4.01	4	4.00
	10:52		Middle	3.0	28.50	28.50		8.52	8.52		20.20	20.20		78.8	79.0		5.47	5.48		4.01	4.00		4	
18/6/2016	11:38	Fine	Middle	2.5	27.70	27.70	27.80	8.48	8.48	8.50	25.49	25.49	25.46	68.8	68.7	67.8	4.69	4.69	4.62	5.13	4.94	5.01	4	4.00
	11:40		Middle	2.5	27.90	27.90		8.51	8.51		25.43	25.43		67.4	66.1		4.59	4.49		4.95	5.00		4	
20/6/2016	14:51	Sunny	Middle	2.5	29.40	29.40	29.35	8.97	8.97	8.97	23.65	23.65	23.65	105.5	105.2	104.9	7.09	7.07	7.05	5.77	5.75	5.74	10	9.00
	14:53		Middle	2.5	29.30	29.30		8.97	8.97		23.65	23.65		105.1	103.8		7.06	6.97		5.71	5.73		8	
22/6/2016	14:50	Sunny	Middle	2.5	28.30	28.30	28.15	8.65	8.65	8.66	28.19	28.19	28.18	77.9	77.0	75.9	5.22	5.16	5.08	6.68	6.68	6.79	7	7.00
	14:52		Middle	2.5	28.00	28.00		8.67	8.67		28.17	28.17		74.7	73.8		5.00	4.94		6.89	6.92		7	
24/6/2016	15:41	Fine	Middle	3.5	27.40	27.40	27.50	8.61	8.61	8.63	28.95	28.95	28.89	81.6	77.4	79.6	5.48	5.70	5.47	4.55	4.68	4.72	3	3.50
	15:43		Middle	3.5	27.60	27.60		8.64	8.64		28.82	28.82		80.3	79.1		5.39	5.31		4.82	4.82		4	

Remarks:
Single underline denotes exceedance over Action Level.
Double underline denotes exceedance over Limit Level.



**Water Monitoring Result at P4 - SOC
Mid-Ebb Tide**

Date	Time	Weather Condition	Sampling Depth		Water Temperature			pH			Salinity		DO Saturation		DO		Turbidity		Suspended Solids					
					°C			-			ppt		%		mg/L		NTU		mg/L					
					Value	Average		Value	Average		Value	Average	Value	Average	Value	Average	Value	Average	Value	Average	Value	Average		
27/5/2016	-	Strong Wind Signal No. 3	Middle	-	-	-	#DIV/0!	-	-	#DIV/0!	-	-	#DIV/0!	-	-	#DIV/0!	-	-	#DIV/0!	-	-	#DIV/0!		
	-		Middle	-	-	-		-	-		-	-		-	-		-	-		-	-		-	-
30/5/2016	16:44	Cloudy	Middle	2.5	28.70	28.70	28.70	8.63	8.63	8.64	27.80	27.80	27.82	75.9	78.2	75.8	5.03	5.19	5.02	4.40	4.54	4.53	5	5.00
	16:46		Middle	2.5	28.70	28.70		8.64	8.64		27.83	27.83		75.6	73.3		5.01	4.86		4.60	4.56		5	
1/6/2016	9:10	Fine	Middle	2.5	27.80	27.80	27.80	8.62	8.62	8.63	25.63	25.63	25.64	78.4	79.4	78.7	5.34	5.41	5.36	3.65	3.69	3.75	3	3.50
	9:12		Middle	2.5	27.80	27.80		8.63	8.63		25.64	25.64		77.9	78.9		5.30	5.37		3.79	3.86		4	
3/6/2016	11:00	Fine	Middle	3.0	28.60	28.60	28.60	8.65	8.65	8.66	25.81	25.81	25.81	80.4	80.4	80.2	5.40	5.40	5.39	3.98	3.83	3.82	4	4.00
	11:02		Middle	3.0	28.60	28.60		8.66	8.66		25.81	25.81		80.1	80.0		5.38	5.38		3.74	3.74		4	
6/6/2016	-	Amber Rainstorm Warning Signal	Middle	-	-	-	#DIV/0!	-	-	#DIV/0!	-	-	#DIV/0!	-	-	#DIV/0!	-	-	#DIV/0!	-	-	#DIV/0!	-	#DIV/0!
	-		Middle	-	-	-		-	-		-	-		-	-		-	-		-	-		-	
8/6/2016	15:26	Cloudy	Middle	2.5	27.30	27.30	27.30	8.52	8.52	8.53	28.60	28.60	28.60	64.1	62.2	63.5	4.34	4.20	4.29	3.24	3.28	3.23	3	3.50
	15:28		Middle	2.5	27.30	27.30		8.53	8.53		28.59	28.59		63.2	64.5		4.27	4.36		3.25	3.15		4	
10/6/2016	16:19	Fine	Middle	2.5	27.40	27.40	27.45	8.51	8.51	8.52	29.00	29.00	29.00	65.6	66.1	65.7	4.41	4.44	4.41	2.82	2.85	2.82	2	2.00
	16:21		Middle	2.5	27.50	27.50		8.52	8.52		28.99	28.99		65.4	65.5		4.40	4.40		2.86	2.75		2	
13/6/2016	16:34	Fine	Middle	3.5	28.20	28.20	28.25	8.38	8.38	8.39	25.21	25.21	25.21	72.6	71.6	72.3	4.92	4.84	4.89	2.57	2.60	2.57	3	3.00
	16:36		Middle	3.5	28.30	28.30		8.39	8.39		25.21	25.21		72.2	72.8		4.89	4.89		2.56	2.54		3	
16/6/2016	10:55	Fine	Middle	3.0	28.40	28.40	28.40	8.53	8.53	8.54	20.14	20.14	20.15	79.2	79.4	79.1	5.50	5.51	5.50	3.50	3.62	3.60	4	4.00
	10:57		Middle	3.0	28.40	28.40		8.55	8.55		20.15	20.15		78.5	79.4		5.46	5.52		3.63	3.64		4	
18/6/2016	11:42	Fine	Middle	2.5	27.90	27.90	27.80	8.52	8.52	8.53	25.09	25.09	25.11	66.2	66.4	65.6	4.53	4.54	4.49	5.48	5.47	5.49	3	3.50
	11:44		Middle	2.5	27.70	27.70		8.54	8.54		25.13	25.13		65.6	64.3		4.49	4.40		5.54	5.47		4	
20/6/2016	14:55	Sunny	Middle	2.5	29.40	29.40	29.45	8.99	8.99	9.00	23.25	23.25	23.27	92.8	92.1	92.0	6.23	6.18	6.17	8.15	8.13	8.20	9	8.50
	14:57		Middle	2.5	29.50	29.50		9.01	9.01		23.28	23.28		91.0	91.9		6.11	6.16		8.22	8.28		8	
22/6/2016	14:54	Sunny	Middle	2.5	27.90	27.90	27.85	8.68	8.68	8.68	28.13	28.13	28.13	68.0	69.2	69.6	4.58	4.65	4.68	5.60	5.61	5.54	8	7.50
	14:56		Middle	2.5	27.80	27.80		8.68	8.68		28.12	28.12		71.0	70.0		4.77	4.70		5.48	5.45		7	
24/6/2016	15:45	Fine	Middle	3.5	27.30	27.30	27.35	8.65	8.65	8.66	29.01	28.01	28.76	80.3	79.1	78.3	5.41	5.33	5.50	4.87	4.87	4.86	5	5.00
	15:47		Middle	3.5	27.40	27.40		8.66	8.66		29.01	29.01		77.2	76.5		5.70	5.55		4.86	4.85		5	

Remarks:
Single underline denotes exceedance over Action Level.
Double underline denotes exceedance over Limit Level.



**Water Monitoring Result at P5 - WCT / RT / IT
Mid-Ebb Tide**

Date	Time	Weather Condition	Sampling Depth		Water Temperature			pH			Salinity		DO Saturation		DO		Turbidity		Suspended Solids					
					°C			-			ppt		%		mg/L		NTU		mg/L					
					Value	Average		Value	Average		Value	Average	Value	Average	Value	Average	Value	Average	Value	Average				
27/5/2016	-	Strong Wind Signal No. 3	Middle	-	-	-	#DIV/0!	-	-	#DIV/0!	-	-	#DIV/0!	-	-	#DIV/0!	-	-	#DIV/0!	-	#DIV/0!			
	-		Middle	-	-	-	#DIV/0!	-	-	#DIV/0!	-	-	#DIV/0!	-	-	#DIV/0!	-	-	#DIV/0!	-	#DIV/0!			
30/5/2016	16:48	Cloudy	Middle	2.5	28.50	28.50	28.50	8.65	8.65	8.66	27.86	27.86	27.73	69.3	70.8	70.1	4.61	4.71	4.66	3.99	4.20	4.12	5	5.50
	16:50		Middle	2.5	28.50	28.50	28.50	8.66	8.66	8.66	27.87	27.31	27.73	70.0	70.4	70.1	4.65	4.68	4.66	4.15	4.13	4.12	6	5.50
1/6/2016	9:15	Fine	Middle	2.5	27.80	27.80	27.75	8.63	8.63	8.63	25.66	25.66	25.67	78.9	78.9	77.6	5.38	5.38	5.28	2.64	2.72	2.77	4	3.50
	9:17		Middle	2.5	27.70	27.70	27.75	8.63	8.63	8.63	25.67	25.67	25.67	74.9	77.7	77.6	5.10	5.25	5.28	2.77	2.95	2.77	3	3.50
3/6/2016	11:05	Fine	Middle	3.0	28.40	28.40	28.45	8.65	8.65	8.66	25.72	25.72	25.72	78.7	79.4	78.8	5.30	5.34	5.30	3.69	3.76	3.73	4	4.00
	11:07		Middle	3.0	28.50	28.50	28.45	8.67	8.67	8.66	25.72	25.72	25.72	78.6	78.3	78.8	5.29	5.27	5.30	3.77	3.70	3.73	4	4.00
6/6/2016	-	Amber Rainstorm Warning Signal	Middle	-	-	-	#DIV/0!	-	-	#DIV/0!	-	-	#DIV/0!	-	-	#DIV/0!	-	-	#DIV/0!	-	-	#DIV/0!	-	#DIV/0!
	-		Middle	-	-	-	#DIV/0!	-	-	#DIV/0!	-	-	#DIV/0!	-	-	#DIV/0!	-	-	#DIV/0!	-	-	#DIV/0!	-	#DIV/0!
8/6/2016	15:30	Cloudy	Middle	2.5	27.30	27.30	27.30	8.53	8.53	8.54	28.43	28.43	28.48	61.8	64.2	62.8	4.18	4.34	4.27	3.26	3.25	3.26	5	4.50
	15:32		Middle	2.5	27.30	27.30	27.30	8.54	8.54	8.54	28.52	28.52	28.48	63.6	61.4	62.8	4.30	4.25	4.27	3.26	3.27	3.26	4	4.50
10/6/2016	16:23	Fine	Middle	2.5	27.50	27.50	27.35	8.53	8.53	8.53	28.91	28.91	28.97	67.0	65.2	65.1	4.52	4.40	4.39	3.35	3.36	3.41	4	4.50
	16:25		Middle	2.5	27.20	27.20	27.35	8.53	8.52	8.53	29.02	29.02	28.97	64.2	63.8	65.1	4.33	4.30	4.39	3.44	3.47	3.41	5	4.50
13/6/2016	16:38	Fine	Middle	3.5	27.90	27.90	28.00	8.40	8.40	8.41	25.13	25.13	25.14	70.7	70.2	69.2	4.82	4.78	4.72	2.72	2.73	2.73	3	2.50
	16:40		Middle	3.5	28.10	28.10	28.00	8.41	8.41	8.41	25.14	25.14	25.14	69.8	66.0	69.2	4.75	4.53	4.72	2.74	2.74	2.73	2	2.50
16/6/2016	11:00	Fine	Middle	3.0	28.30	28.30	28.30	8.56	8.56	8.57	20.10	20.10	20.12	78.1	79.6	78.7	5.44	5.54	5.48	3.37	3.30	3.32	4	4.00
	11:02		Middle	3.0	28.30	28.30	28.30	8.57	8.57	8.57	20.14	20.14	20.12	78.6	78.4	78.7	5.47	5.46	5.48	3.30	3.31	3.32	4	4.00
18/6/2016	11:46	Fine	Middle	2.5	27.70	27.70	27.50	8.55	8.55	8.55	25.11	25.11	25.21	65.2	63.2	62.7	4.48	4.43	4.33	6.01	6.00	6.00	4	4.00
	11:48		Middle	2.5	27.30	27.30	27.50	8.55	8.55	8.55	25.30	25.30	25.21	61.8	60.6	62.7	4.25	4.17	4.33	6.00	6.00	6.00	4	4.00
20/6/2016	14:59	Sunny	Middle	2.5	29.20	29.20	29.20	9.01	9.01	9.01	23.51	23.51	23.51	87.7	88.0	88.0	5.91	5.93	5.93	7.98	8.06	8.03	6	6.50
	15:01		Middle	2.5	29.20	29.20	29.20	9.01	9.01	9.01	23.50	23.50	23.51	89.2	87.0	88.0	6.00	5.86	5.93	8.06	8.00	8.03	7	6.50
22/6/2016	14:58	Sunny	Middle	2.5	27.40	27.40	27.40	8.69	8.69	8.69	28.11	28.11	28.12	71.6	70.5	71.4	4.85	4.77	4.83	5.18	5.10	5.11	5	6.00
	15:00		Middle	2.5	27.40	27.40	27.40	8.69	8.69	8.69	28.12	28.12	28.12	71.0	72.3	71.4	4.80	4.89	4.83	5.06	5.08	5.11	7	6.00
24/6/2016	15:49	Fine	Middle	3.5	27.20	27.20	27.25	8.67	8.67	8.68	28.81	28.81	28.81	85.5	84.1	83.1	5.77	5.67	5.60	4.29	4.16	4.23	5	5.50
	15:51		Middle	3.5	27.30	27.30	27.25	8.68	8.68	8.68	28.81	28.81	28.81	81.4	81.2	83.1	5.49	5.48	5.60	4.20	4.26	4.23	6	5.50

Remarks:
Single underline denotes exceedance over Action Level.
Double underline denotes exceedance over Limit Level.



**Water Monitoring Result at RW21-P789 - Sun Hung Kai Centre
Mid-Ebb Tide**

Date	Time	Weather Condition	Sampling Depth		Water Temperature			pH			Salinity		DO Saturation		DO		Turbidity		Suspended Solids					
					°C			-			ppt		%		mg/L		NTU		mg/L					
					Value	Average		Value	Average		Value	Average	Value	Average	Value	Average	Value	Average	Value	Average				
27/5/2016	-	Strong Wind Signal No. 3	Middle	-	-	-	#DIV/0!	-	-	#DIV/0!	-	-	#DIV/0!	-	-	#DIV/0!	-	-	#DIV/0!	-	#DIV/0!			
	-		Middle	-	-	-	#DIV/0!	-	-	#DIV/0!	-	-	#DIV/0!	-	-	#DIV/0!	-	-	#DIV/0!	-	#DIV/0!			
30/5/2016	18:50	Cloudy	Middle	3.5	28.70	28.70	28.80	8.39	8.39	8.40	28.25	28.25	28.25	85.9	87.1	86.0	5.66	5.73	5.66	5.30	5.18	5.12	4	4.50
	18:51		Middle	3.5	28.90	28.90	28.80	8.40	8.40	8.40	28.24	28.24	28.24	86.0	85.0	86.0	5.66	5.60	5.66	5.01	4.99	5.12	5	4.50
1/6/2016	9:40	Fine	Middle	3.5	27.90	27.90	27.90	8.55	8.55	8.57	26.58	26.58	26.59	78.1	78.3	78.0	5.28	5.29	5.27	3.30	3.30	3.25	4	4.00
	9:42		Middle	3.5	27.90	27.90	27.90	8.59	8.59	8.57	26.59	26.59	26.59	77.8	77.8	78.0	5.26	5.26	5.27	3.27	3.14	3.25	4	4.00
3/6/2016	11:25	Fine	Middle	4.0	28.70	28.70	28.70	8.61	8.61	8.62	26.24	26.24	26.24	82.4	81.9	81.6	5.51	5.48	5.46	4.28	4.28	4.17	6	6.00
	11:27		Middle	4.0	28.70	28.70	28.70	8.63	8.63	8.62	26.24	26.24	26.24	80.9	81.0	81.6	5.41	5.42	5.46	4.06	4.07	4.17	6	6.00
6/6/2016	-	Amber Rainstorm Warning Signal	Middle	-	-	-	#DIV/0!	-	-	#DIV/0!	-	-	#DIV/0!	-	-	#DIV/0!	-	-	#DIV/0!	-	-	#DIV/0!	-	#DIV/0!
	-		Middle	-	-	-	#DIV/0!	-	-	#DIV/0!	-	-	#DIV/0!	-	-	#DIV/0!	-	-	#DIV/0!	-	-	#DIV/0!	-	#DIV/0!
8/6/2016	15:47	Cloudy	Middle	3.5	27.30	27.30	27.35	8.43	8.43	8.42	28.90	28.90	28.90	59.6	58.0	58.3	4.01	3.90	3.92	8.50	8.40	8.50	4	4.00
	15:49		Middle	3.5	27.40	27.40	27.35	8.40	8.40	8.42	28.90	28.90	28.90	57.8	57.7	58.3	3.89	3.89	3.92	8.54	8.54	8.50	4	4.00
10/6/2016	16:45	Fine	Middle	3.5	27.20	27.20	27.20	8.49	8.49	8.50	29.41	29.41	29.41	60.1	59.1	58.7	4.05	3.78	3.90	4.22	4.16	3.95	6	5.00
	16:47		Middle	3.5	27.20	27.20	27.20	8.51	8.51	8.50	29.41	29.41	29.41	58.1	57.5	58.7	3.91	3.87	3.90	3.76	3.66	3.95	4	5.00
13/6/2016	18:21	Fine	Middle	3.5	28.10	28.10	28.40	8.32	8.32	8.33	25.52	25.53	25.53	72.3	73.4	72.6	4.89	4.96	4.91	2.98	2.90	2.96	4	3.50
	18:22		Middle	3.5	28.20	29.20	28.40	8.33	8.33	8.33	25.53	25.53	25.53	72.4	72.1	72.6	4.89	4.88	4.91	2.92	3.03	2.96	3	3.50
16/6/2016	11:15	Fine	Middle	3.5	28.30	28.30	28.35	8.43	8.43	8.45	21.28	21.28	21.30	61.8	62.5	62.1	4.27	4.32	4.29	3.27	3.25	3.25	4	4.00
	11:17		Middle	3.5	28.40	28.40	28.35	8.46	8.46	8.45	21.31	21.31	21.30	62.0	62.2	62.1	4.28	4.30	4.29	3.24	3.23	3.25	4	4.00
18/6/2016	12:04	Fine	Middle	3.5	27.50	27.50	27.55	8.41	8.41	8.44	26.24	26.24	26.22	64.9	65.7	64.7	4.42	4.48	4.42	5.64	5.64	5.68	7	6.50
	12:06		Middle	3.5	27.60	27.60	27.55	8.46	8.46	8.44	26.19	26.19	26.22	65.1	63.1	64.7	4.44	4.34	4.42	5.73	5.71	5.68	6	6.50
20/6/2016	15:18	Sunny	Middle	3.5	29.30	29.30	29.30	8.78	8.78	8.81	23.97	23.97	23.96	85.6	86.2	87.7	5.74	5.78	5.88	6.72	6.46	6.44	8	8.00
	15:20		Middle	3.5	29.30	29.30	29.30	8.84	8.84	8.81	23.95	23.95	23.96	89.5	89.4	87.7	6.00	5.99	5.88	6.30	6.29	6.44	8	8.00
22/6/2016	11:18	Sunny	Middle	3.5	27.30	27.30	27.40	8.51	8.51	8.53	29.91	29.91	29.90	64.3	63.6	63.6	4.30	4.26	4.25	5.27	5.22	5.25	9	8.00
	11:20		Middle	3.5	27.50	27.50	27.40	8.55	8.55	8.53	29.88	29.88	29.90	63.0	63.3	63.6	4.22	4.23	4.25	5.22	5.29	5.25	7	8.00
24/6/2016	16:00	Fine	Middle	3.5	27.80	27.80	27.85	8.68	8.68	8.66	29.17	29.17	29.17	87.3	86.7	85.9	5.82	5.78	5.73	5.47	5.48	5.48	9	7.50
	16:02		Middle	3.5	27.90	27.90	27.85	8.64	8.64	8.66	29.17	29.17	29.17	85.6	83.9	85.9	5.71	5.59	5.73	5.48	5.47	5.48	6	7.50

Remarks:
Single underline denotes exceedance over Action Level.
Double underline denotes exceedance over Limit Level.



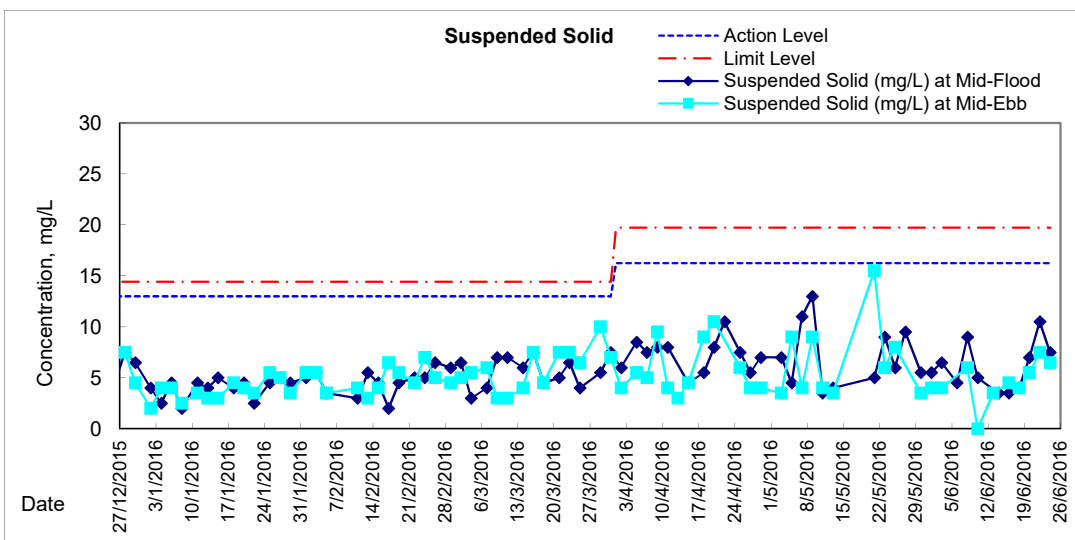
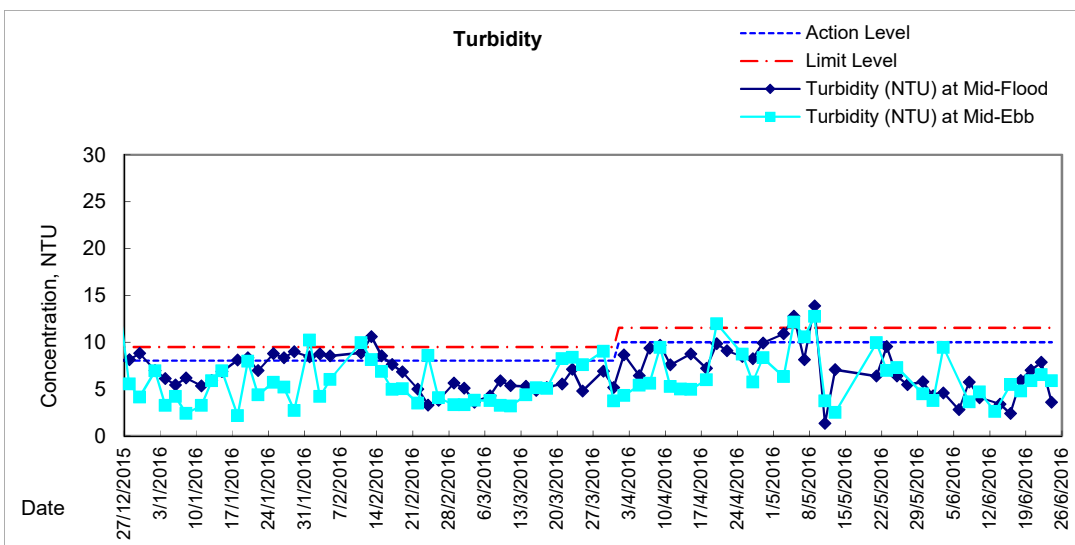
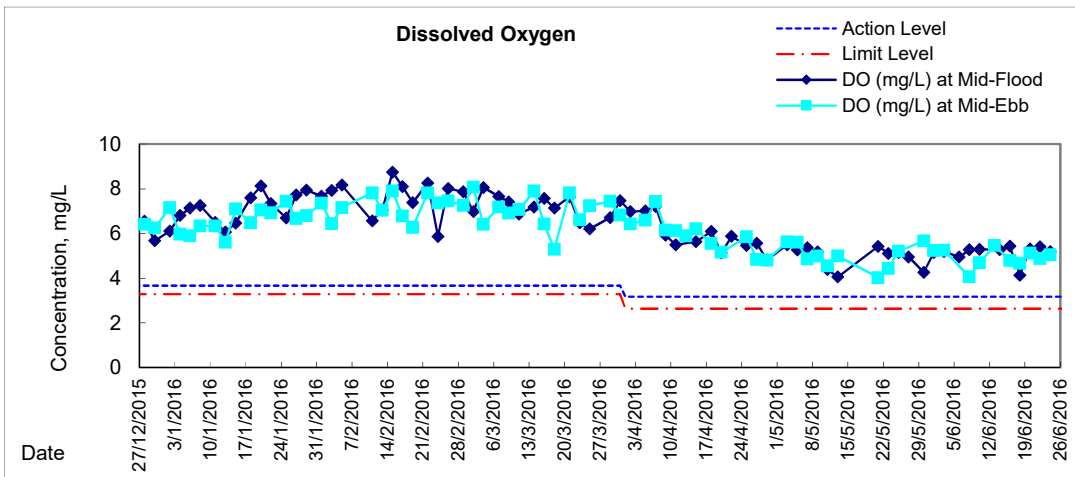
**Water Monitoring Result at WSD19 - Sheung Wan
Mid-Ebb Tide**

Date	Time	Weather Condition	Sampling Depth		Water Temperature			pH			Salinity		DO Saturation		DO		Turbidity		Suspended Solids					
					°C			-			ppt		%		mg/L		NTU		mg/L					
					Value	Average		Value	Average		Value	Average	Value	Average	Value	Average	Value	Average	Value	Average				
27/5/2016	-	Strong Wind Signal No. 3	Middle	-	-	-	#DIV/0!	-	-	#DIV/0!	-	-	#DIV/0!	-	-	#DIV/0!	-	-	#DIV/0!	-	-	#DIV/0!		
	-		Middle	-	-	-		-	-		-	-		-	-		-	-		-	-		-	-
30/5/2016	19:45	Cloudy	Middle	3.5	28.40	28.40	28.45	8.30	8.30	8.34	27.36	27.36	27.37	85.7	85.9	84.9	5.71	5.73	5.66	4.61	4.50	4.51	3	3.50
	19:46		Middle	3.5	28.50	28.50		8.38	8.38		27.37	27.37		84.4	83.5		5.63	5.57		4.47	4.45		4	
1/6/2016	8:30	Fine	Middle	3.5	28.40	28.40	28.50	8.44	8.44	8.47	25.72	25.72	25.72	77.4	77.9	77.9	5.21	5.23	5.24	3.72	3.75	3.77	4	4.00
	8:32		Middle	3.5	28.60	28.60		8.50	8.50		25.72	25.72		77.8	78.4		5.23	5.27		3.78	3.82		4	
3/6/2016	10:05	Fine	Middle	4.0	29.30	29.30	29.40	8.57	8.57	8.59	25.20	25.20	25.20	79.3	80.0	79.0	5.27	5.31	5.25	9.54	9.45	9.44	4	4.00
	10:07		Middle	4.0	29.50	29.50		8.60	8.60		25.20	25.20		79.1	77.5		5.26	5.15		9.43	9.32		4	
6/6/2016	-	Amber Rainstorm Warning Signal	Middle	-	-	-	#DIV/0!	-	-	#DIV/0!	-	-	#DIV/0!	-	-	#DIV/0!	-	-	#DIV/0!	-	-	#DIV/0!	-	#DIV/0!
	-		Middle	-	-	-		-	-		-	-		-	-		-	-		-	-			
8/6/2016	14:31	Cloudy	Middle	3.5	27.40	27.40	27.55	8.36	8.36	8.40	28.67	28.67	28.65	61.2	61.3	60.5	4.09	4.10	4.05	3.57	3.51	3.64	6	6.00
	14:33		Middle	3.5	27.70	27.70		8.44	8.44		28.62	28.62		60.3	59.2		4.04	3.96		3.74	3.72		6	
10/6/2016	15:29	Fine	Middle	3.5	28.70	28.70	28.75	8.16	8.16	8.26	28.24	28.24	28.15	70.9	71.2	70.4	4.72	4.73	4.68	4.79	4.67	4.69	<2	<2
	15:31		Middle	3.5	28.80	28.80		8.35	8.35		28.06	28.06		70.7	68.7		4.70	4.57		4.57	4.74		<2	
13/6/2016	19:22	Fine	Middle	3.0	27.90	27.90	27.93	8.28	8.28	8.28	26.09	26.09	26.06	72.7	73.9	74.6	5.31	5.41	5.45	2.52	2.55	2.61	4	3.50
	19:23		Middle	3.0	28.00	27.90		8.28	8.28		26.03	26.03		75.9	75.9		5.55	5.54		2.74	2.62		3	
16/6/2016	10:00	Fine	Middle	3.5	28.60	28.60	28.70	8.18	8.18	8.26	20.74	20.74	20.72	69.4	69.4	69.5	4.79	4.79	4.79	5.47	5.47	5.47	4	4.50
	10:02		Middle	3.5	28.80	28.80		8.33	8.33		20.70	20.70		68.2	71.0		4.70	4.89		5.47	5.46		5	
18/6/2016	10:42	Fine	Middle	3.5	28.00	28.00	28.15	8.14	8.14	8.19	24.77	24.37	24.64	69.3	69.2	68.6	4.71	4.70	4.66	4.80	4.81	4.81	4	4.00
	10:44		Middle	3.5	28.30	28.30		8.24	8.24		24.71	24.71		68.5	67.3		4.66	4.57		4.82	4.82		4	
20/6/2016	11:26	Sunny	Middle	3.5	29.20	29.20	29.35	8.65	8.65	8.68	24.45	24.45	24.42	77.7	76.9	76.6	5.19	5.13	5.11	5.93	5.90	5.91	5	5.50
	11:28		Middle	3.5	29.50	29.50		8.71	8.71		24.39	24.39		76.1	75.8		5.07	5.05		5.90	5.89		6	
22/6/2016	10:38	Sunny	Middle	3.5	28.80	28.80	28.05	8.44	8.44	8.50	27.44	27.44	27.44	71.4	72.8	73.0	4.75	4.85	4.87	6.62	6.57	6.54	7	7.50
	10:40		Middle	3.5	27.30	27.30		8.55	8.55		27.44	27.44		74.4	73.4		4.97	4.91		6.47	6.50		8	
24/6/2016	14:40	Fine	Middle	3.5	28.60	28.60	28.85	8.55	8.55	8.57	28.72	28.72	28.71	80.1	72.3	75.5	5.27	5.09	5.05	6.00	5.95	5.90	7	6.50
	14:42		Middle	3.5	29.10	29.10		8.58	8.58		28.69	28.69		75.0	74.7		4.93	4.91		5.82	5.82		6	

Remarks:
Single underline denotes exceedance over Action Level.
Double underline denotes exceedance over Limit Level.

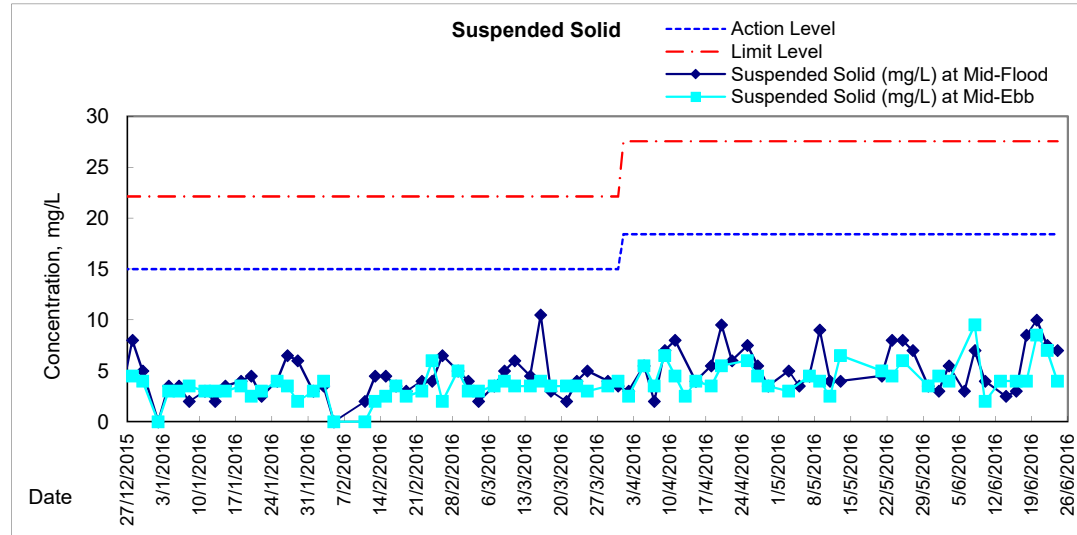
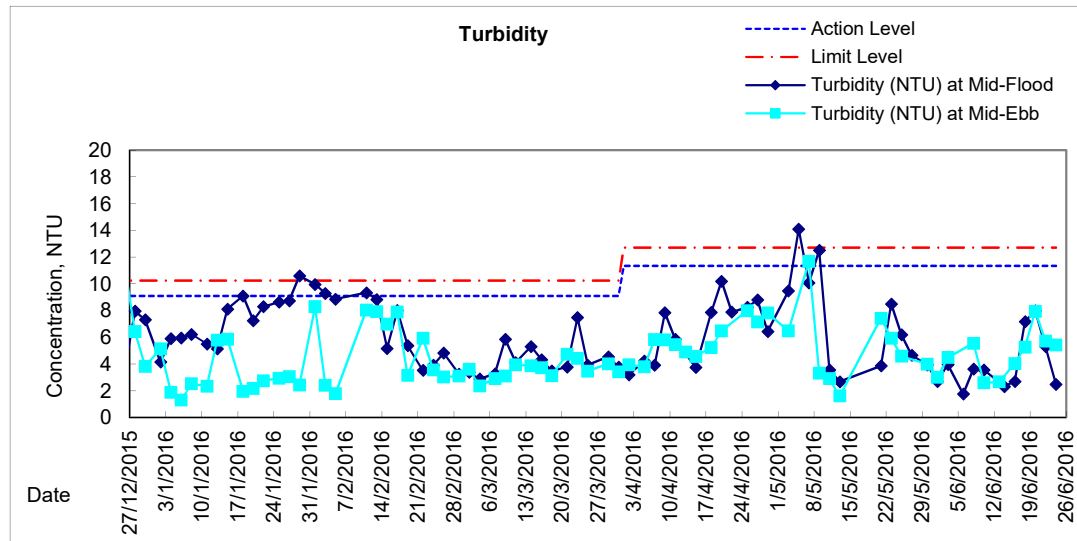
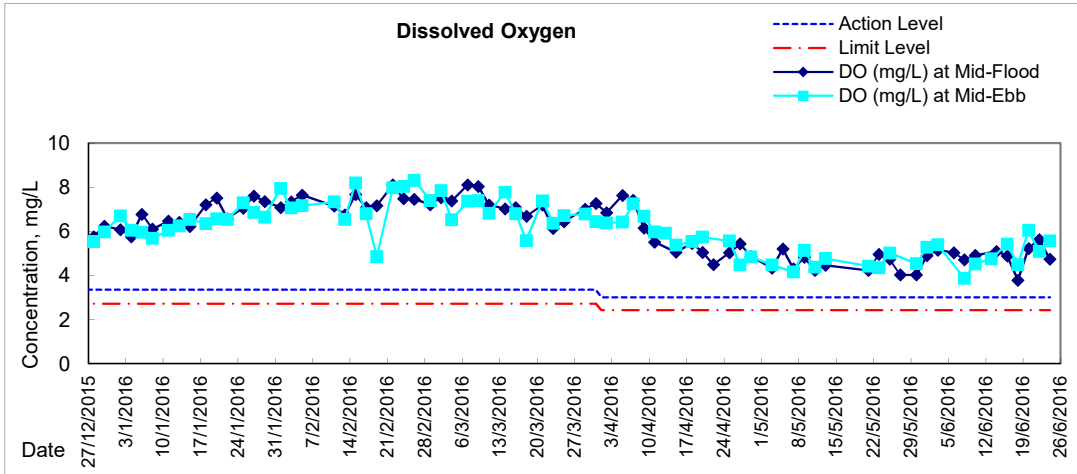


Graphic Presentation of Water Quality Result of WSD19 - Sheung Wan



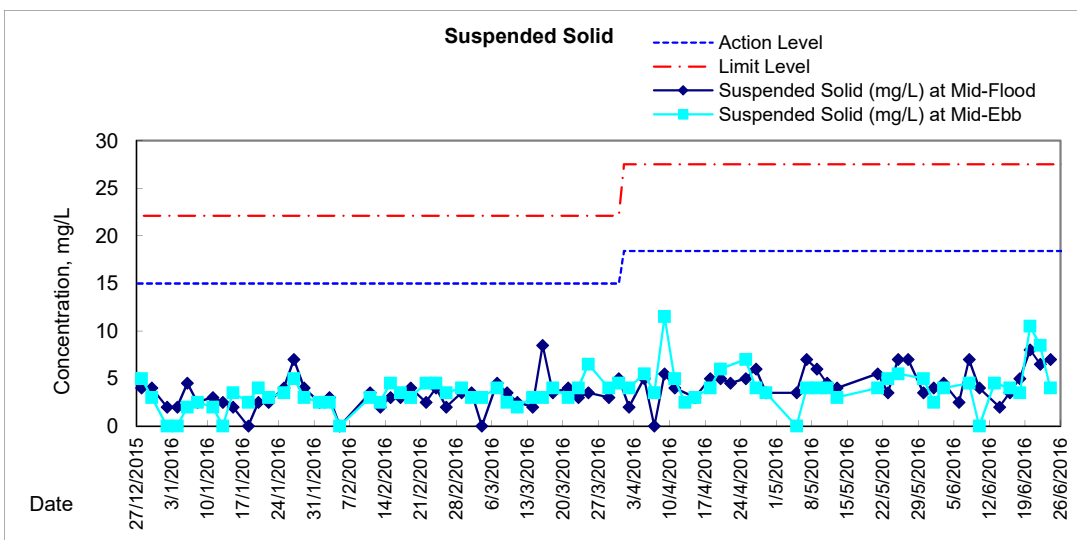
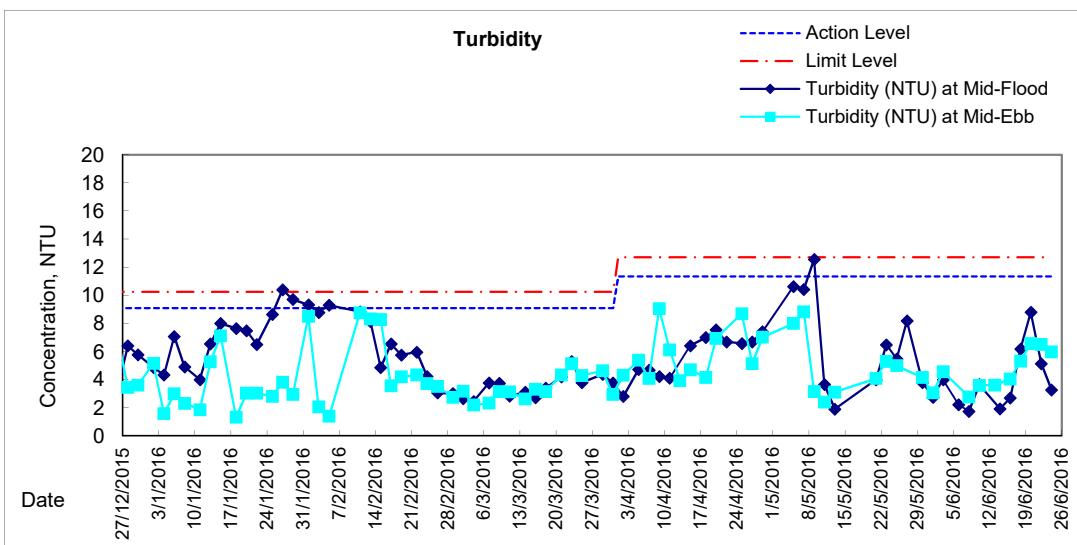
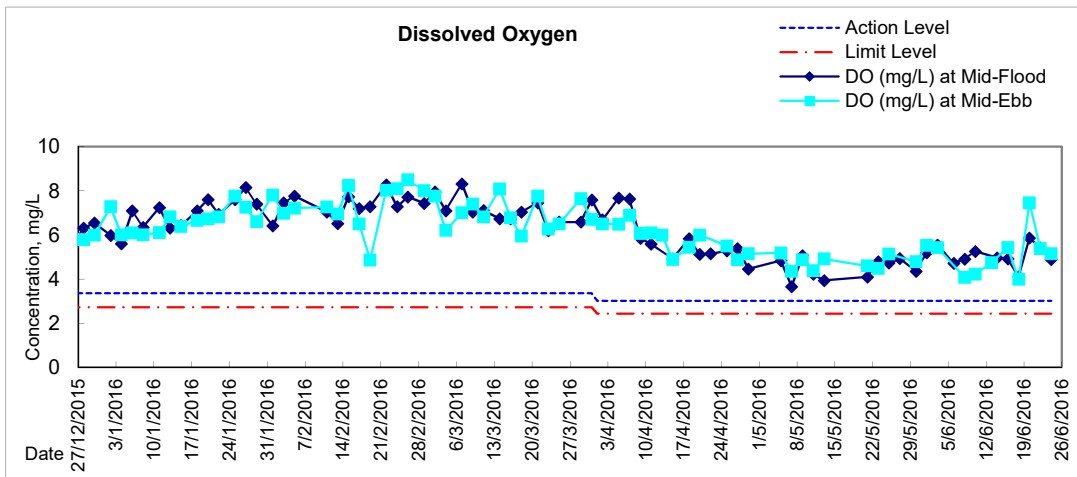


Graphic Presentation of Water Quality Result of C1 - HKCEC



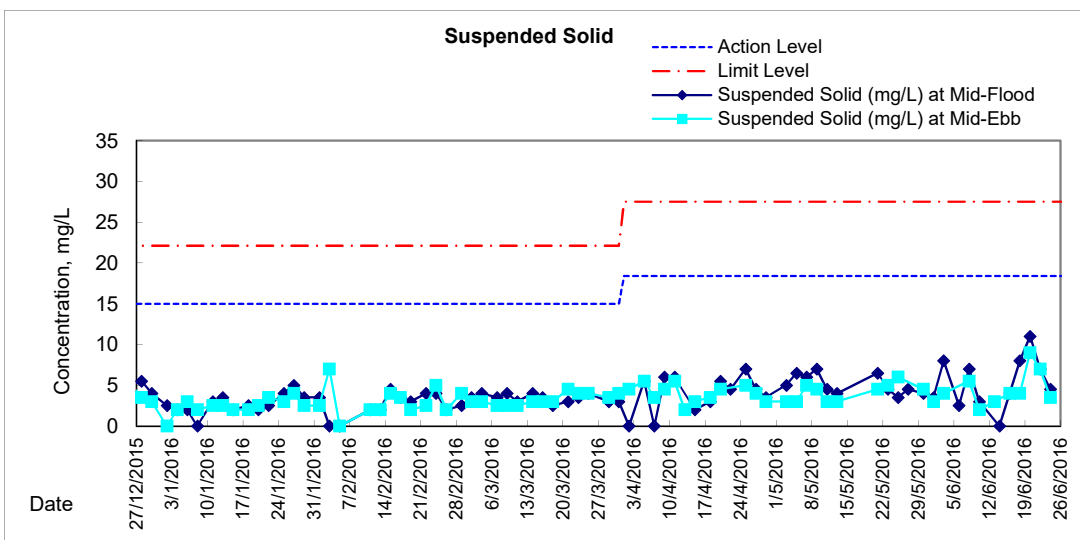
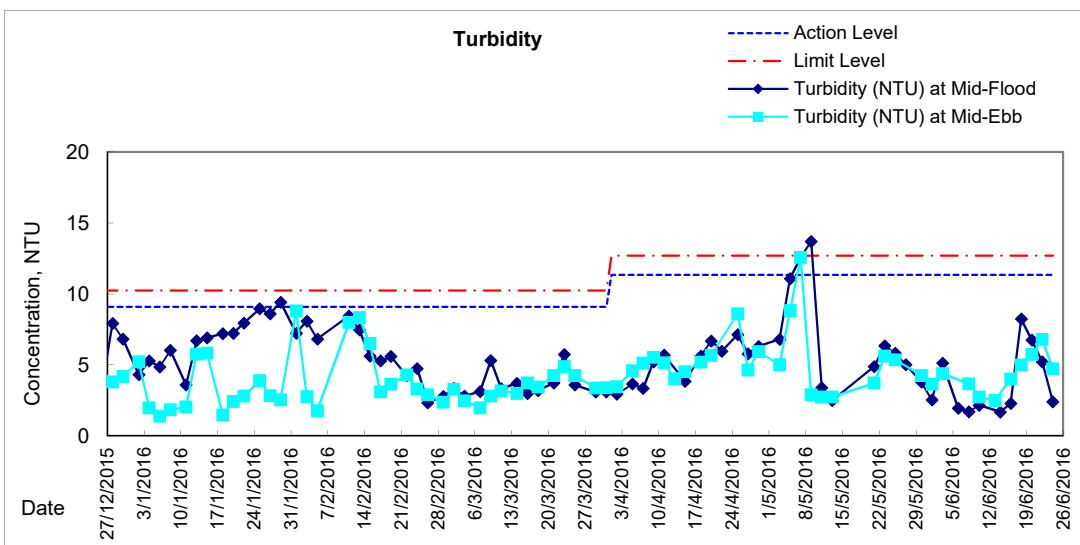
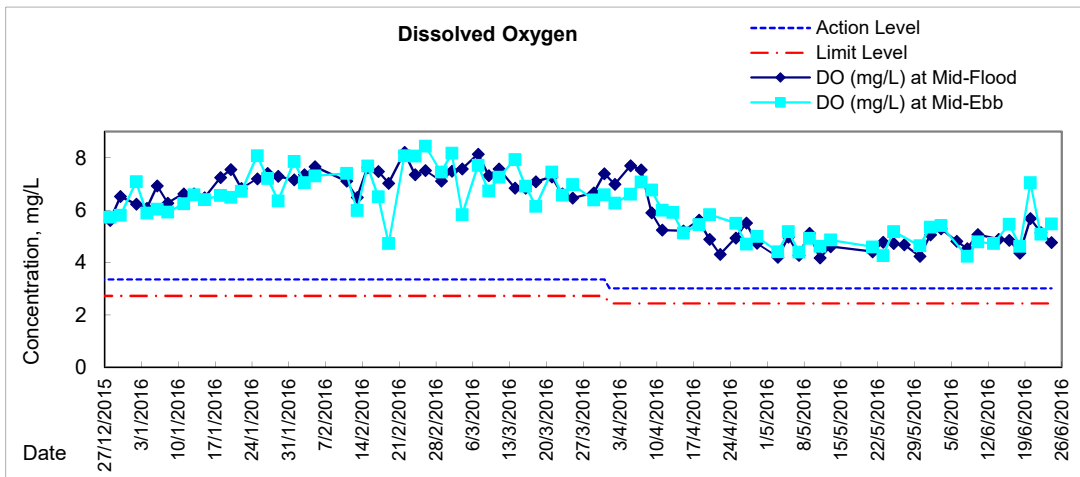


Graphic Presentation of Water Quality Result of P1 - HKCEC Phase I



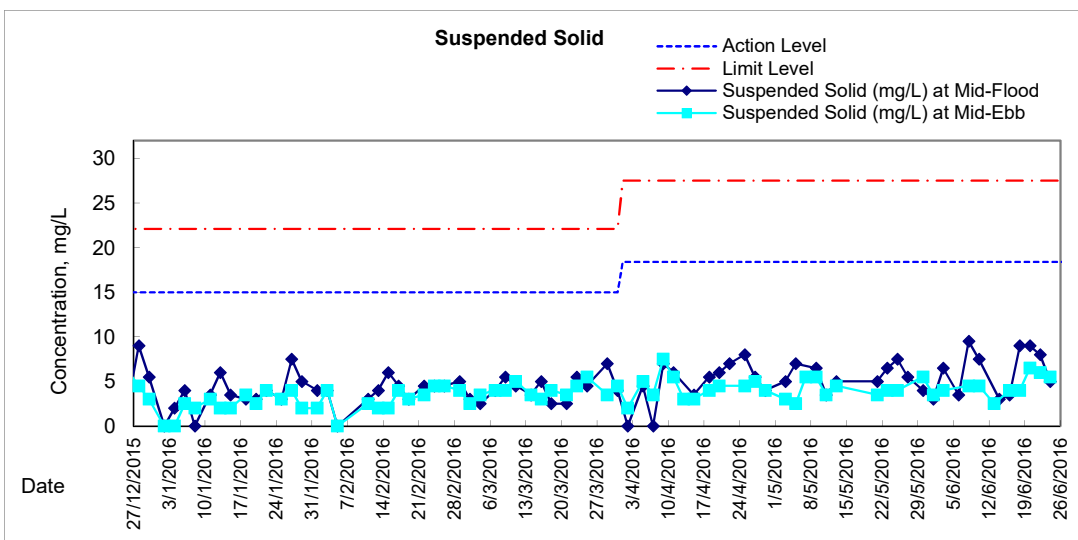
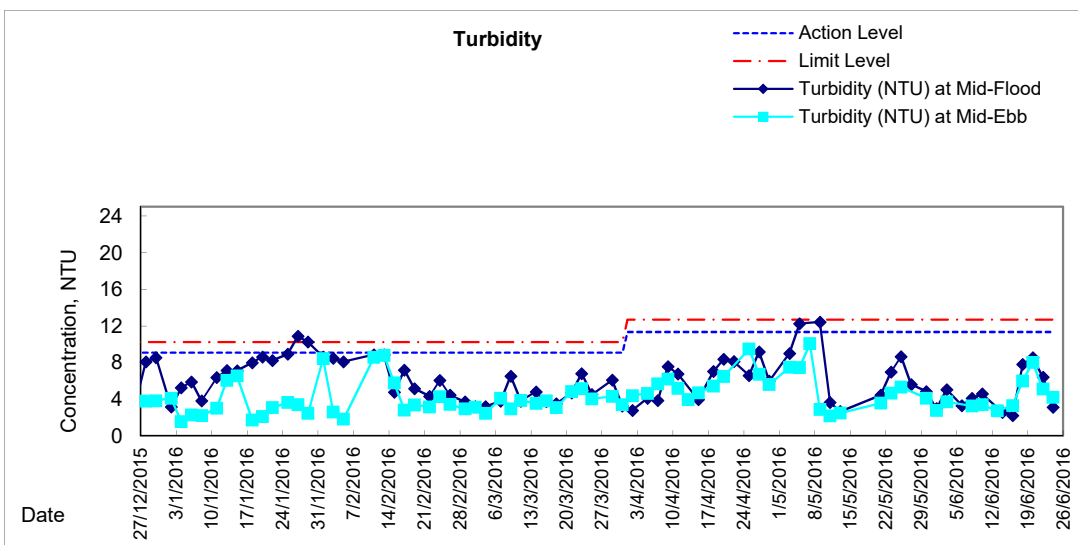
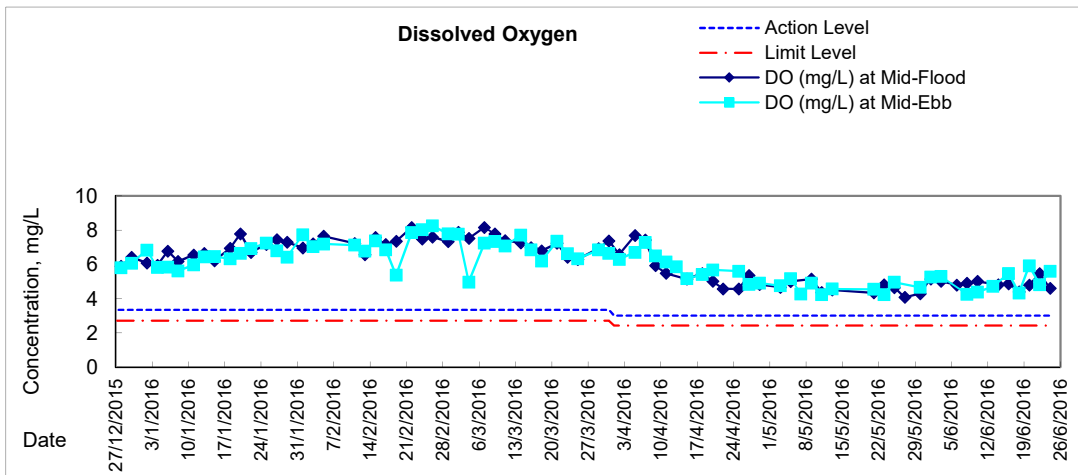


Graphic Presentation of Water Quality Result of P3 - APA



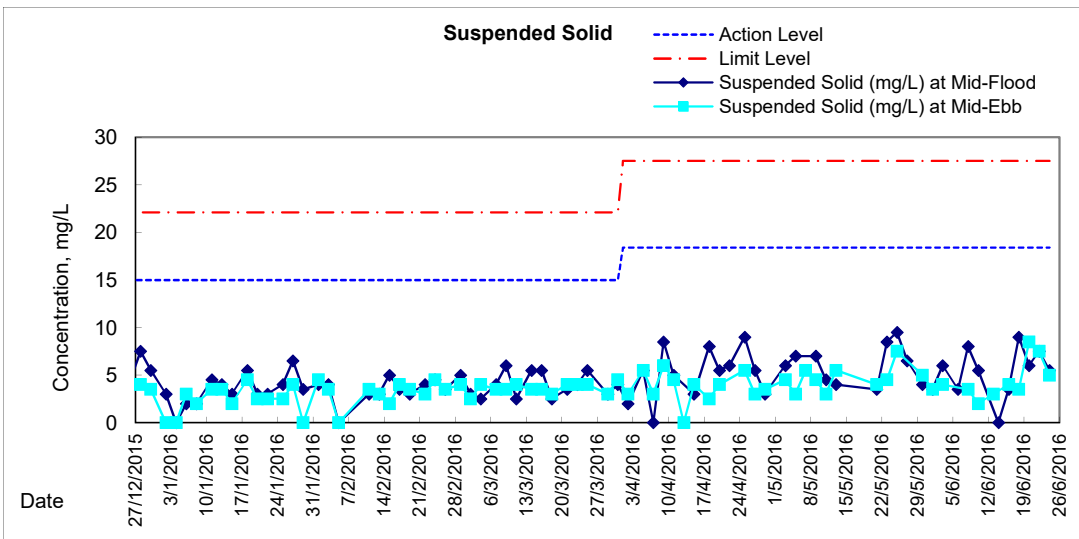
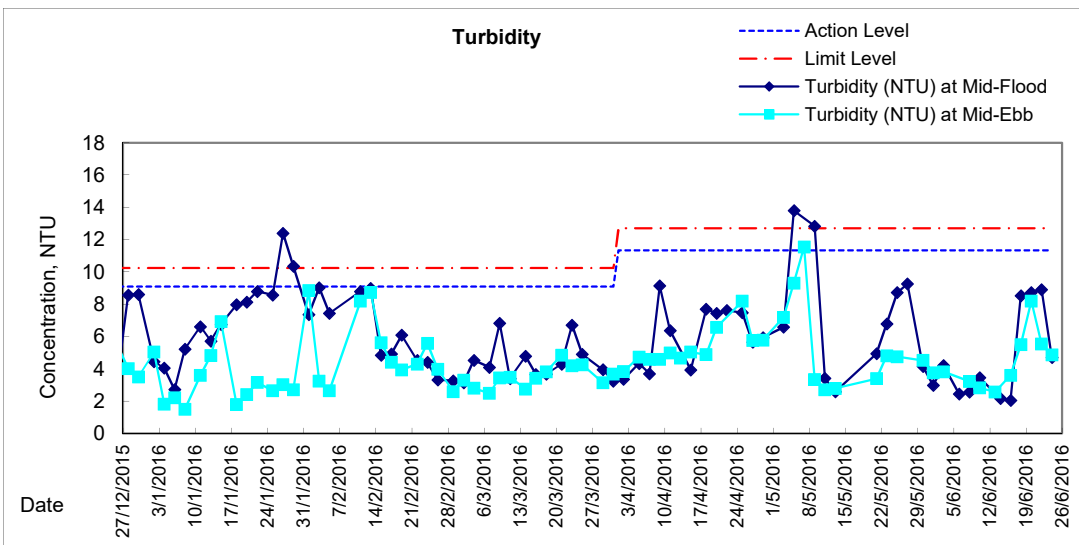
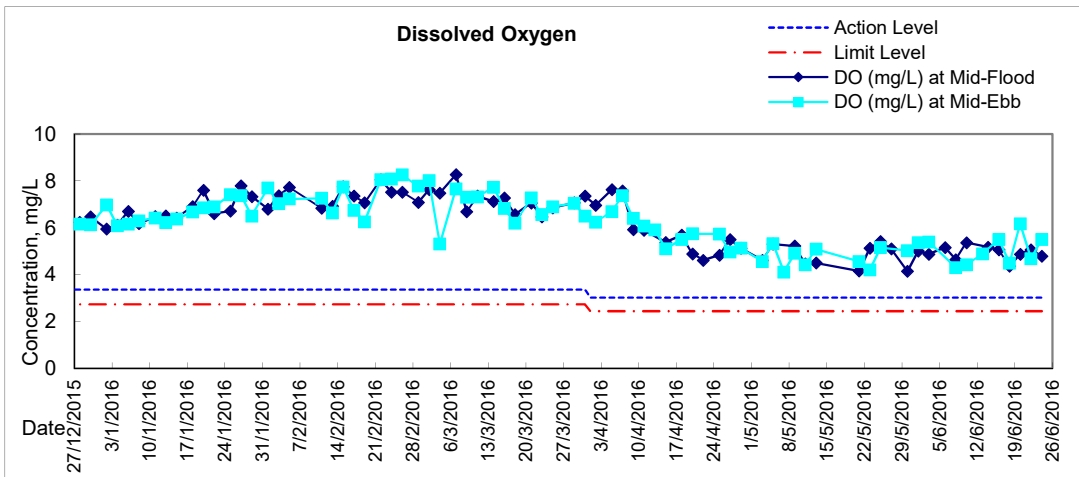


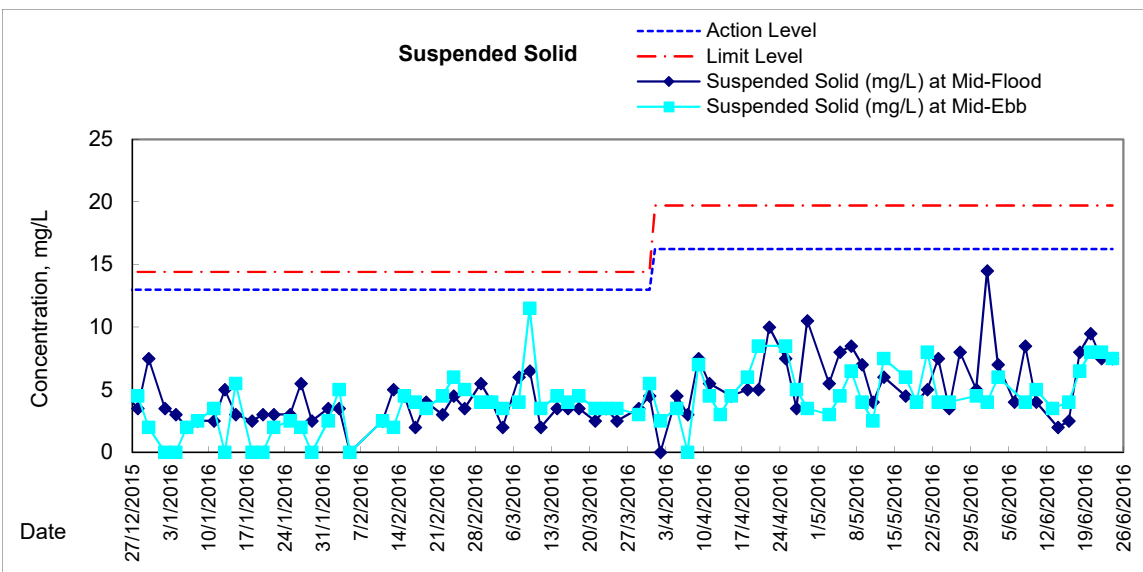
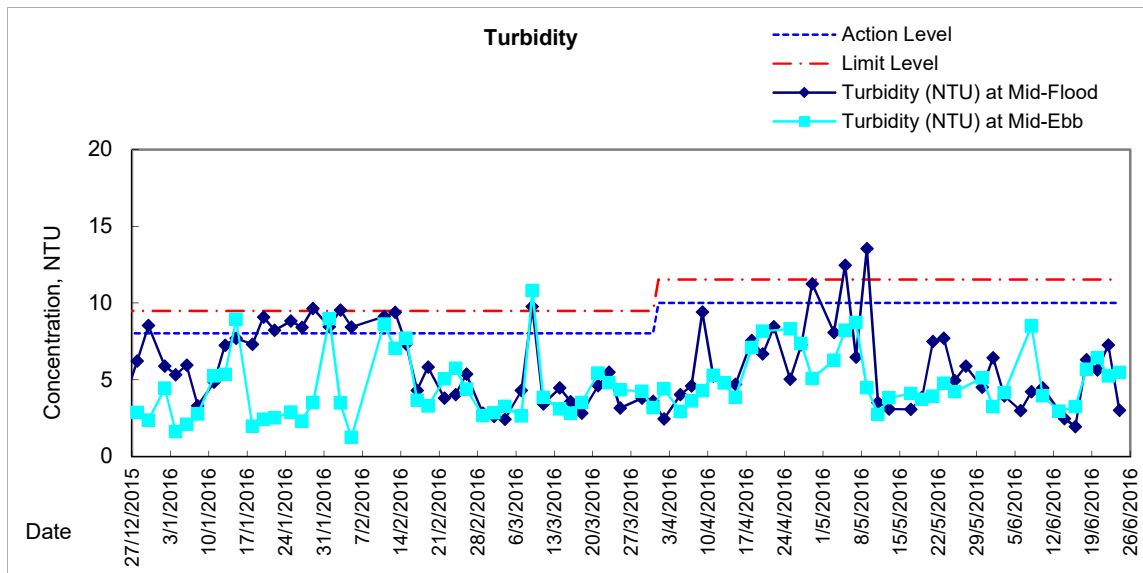
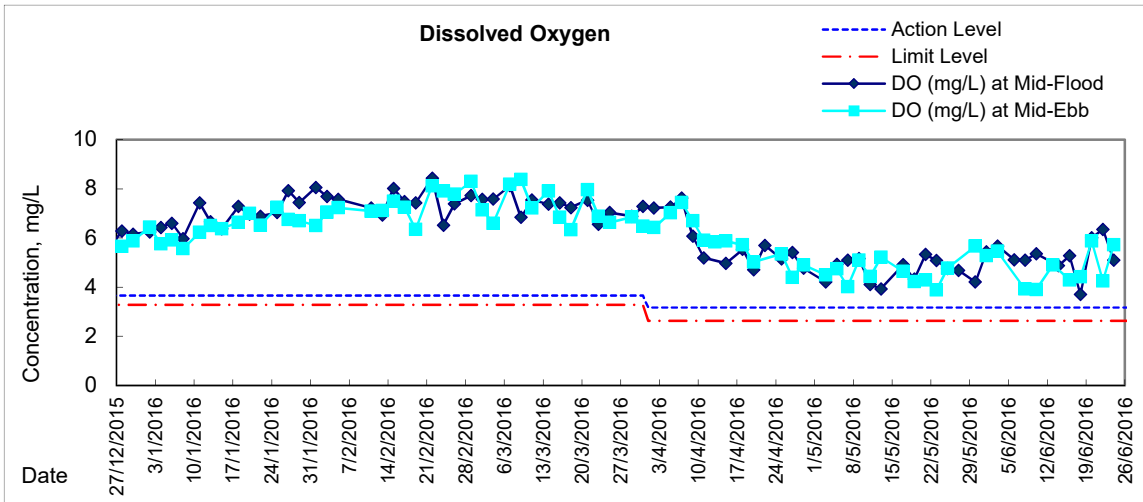
Graphic Presentation of Water Quality Result of P5 - WCT / RT / IT





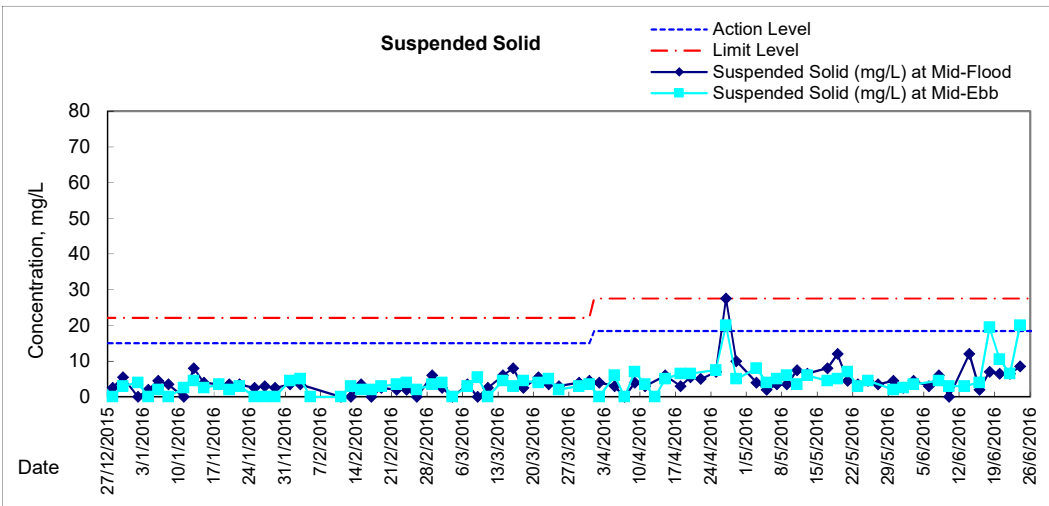
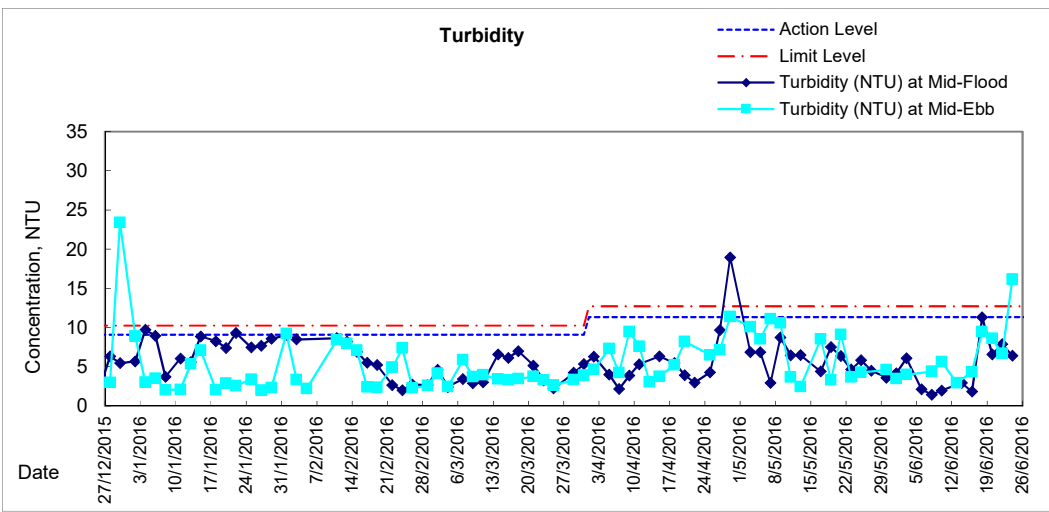
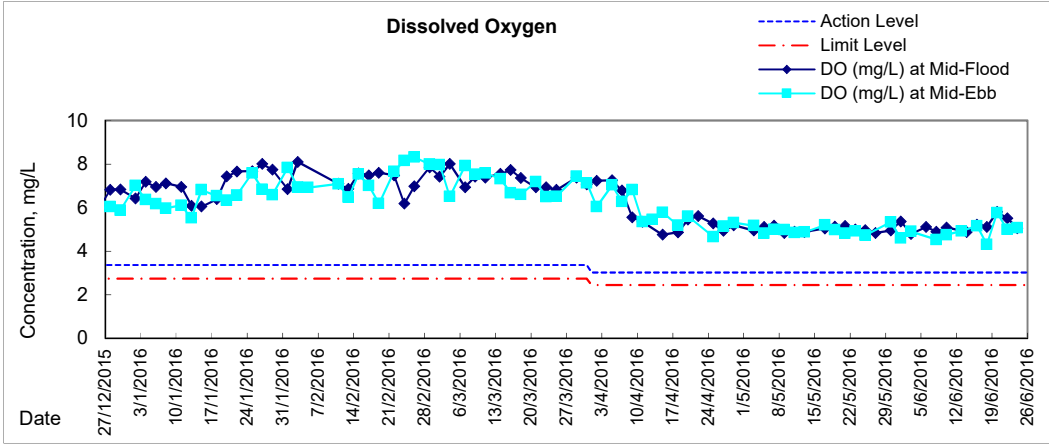
Graphic Presentation of Water Quality Result of P4 - SOC







Graphic Presentation of Water Quality Result of C7 - Windsor House





**Water Monitoring Result at C6 - Excelsior Hotel
Mid-Flood Tide**

Date	Time	Weather Condition	Sampling Depth		Water Temperature			pH		Salinity		DO Saturation		DO					
					°C			-		ppt		%		mg/L					
			m	Value	Average	Value	Average	Value	Average	Value	Average	Value	Average						
27/5/2016	-	Fine	Surface	-	-	-	-	-	-	-	-	-	-	-	-	-	-	-	
	20:16		Middle	1.0	26.80	26.60	26.7	8.20	8.20	8.2	26.26	26.26	26.3	63.1	63.0	63.1	4.11	4.09	4.10
	-		Bottom	-	-	-	-	-	-	-	-	-	-	-	-	-	-	-	-
30/5/2016	14:35	Fine	Surface	1.0	28.30	28.30	28.3	8.47	8.47	8.5	27.88	27.88	27.9	67.9	67.2	67.6	4.52	4.48	4.50
	-		Middle	2.0	-	-	-	-	-	-	-	-	-	-	-	-	-	-	-
	14:37		Bottom	3.0	28.20	28.20	28.2	8.47	8.47	8.5	28.07	28.07	28.1	69.5	70.0	69.8	4.64	4.67	4.66
1/6/2016	-	Fine	Surface	-	-	-	-	-	-	-	-	-	-	-	-	-	-	-	
	15:50		Middle	1.5	29.10	29.10	29.1	8.54	8.54	8.5	25.66	25.66	25.7	68.9	68.8	68.9	4.59	4.57	4.58
	-		Bottom	-	-	-	-	-	-	-	-	-	-	-	-	-	-	-	-
3/6/2016	-	Fine	Surface	-	-	-	-	-	-	-	-	-	-	-	-	-	-	-	
	17:25		Middle	1.0	29.20	29.20	29.2	8.47	8.47	8.5	25.17	25.17	25.2	83.0	81.9	82.5	5.54	5.46	5.50
	-		Bottom	-	-	-	-	-	-	-	-	-	-	-	-	-	-	-	-
6/6/2016	-	Cloudy	Surface	-	-	-	-	-	-	-	-	-	-	-	-	-	-	-	
	18:05		Middle	1.0	26.90	26.90	26.9	8.22	8.22	8.2	24.66	24.66	24.7	60.1	60.7	60.4	4.18	4.22	4.20
	-		Bottom	-	-	-	-	-	-	-	-	-	-	-	-	-	-	-	-
8/6/2016	-	Cloudy	Surface	-	-	-	-	-	-	-	-	-	-	-	-	-	-	-	
	19:13		Middle	1.0	27.30	27.30	27.3	8.29	8.29	8.3	25.53	25.50	25.5	62.6	63.2	62.9	4.30	4.34	4.32
	-		Bottom	-	-	-	-	-	-	-	-	-	-	-	-	-	-	-	-
10/6/2016	-	Cloudy	Surface	-	-	-	-	-	-	-	-	-	-	-	-	-	-	-	
	20:35		Middle	1.0	26.30	26.20	26.3	8.20	8.20	8.2	18.55	18.55	18.6	51.3	51.8	51.6	4.13	4.16	4.15
	-		Bottom	-	-	-	-	-	-	-	-	-	-	-	-	-	-	-	-
14/6/2016	-	Cloudy	Surface	-	-	-	-	-	-	-	-	-	-	-	-	-	-	-	
	2:00		Middle	1.5	28.00	27.90	28.0	8.41	8.41	8.4	22.93	23.09	23.0	52.1	52.5	52.3	3.60	3.62	3.61
	-		Bottom	-	-	-	-	-	-	-	-	-	-	-	-	-	-	-	-
16/6/2016	-	Cloudy	Surface	-	-	-	-	-	-	-	-	-	-	-	-	-	-	-	
	2:45		Middle	1.5	28.30	28.30	28.3	8.46	8.46	8.5	20.72	20.72	20.7	68.2	68.7	68.5	4.73	4.77	4.75
	-		Bottom	-	-	-	-	-	-	-	-	-	-	-	-	-	-	-	-
18/6/2016	-	Fine	Surface	-	-	-	-	-	-	-	-	-	-	-	-	-	-	-	
	18:25		Middle	1.5	27.10	27.10	27.1	8.48	8.48	8.5	25.85	25.85	25.9	64.8	65.9	65.4	4.48	4.56	4.52
	-		Bottom	-	-	-	-	-	-	-	-	-	-	-	-	-	-	-	-
20/6/2016	-	Fine	Surface	-	-	-	-	-	-	-	-	-	-	-	-	-	-	-	
	18:03		Middle	1.0	28.90	28.90	28.9	8.33	8.33	8.3	22.60	22.60	22.6	96.7	97.7	97.2	6.57	6.64	6.61
	-		Bottom	-	-	-	-	-	-	-	-	-	-	-	-	-	-	-	-
22/6/2016	-	Fine	Surface	-	-	-	-	-	-	-	-	-	-	-	-	-	-	-	
	17:43		Middle	1.0	28.70	28.70	28.7	8.39	8.39	8.4	23.64	23.64	23.6	71.7	72.6	72.2	4.85	4.93	4.89
	-		Bottom	-	-	-	-	-	-	-	-	-	-	-	-	-	-	-	-
24/6/2016	-	Fine	Surface	-	-	-	-	-	-	-	-	-	-	-	-	-	-	-	
	19:12		Middle	1.0	29.30	29.30	29.3	8.04	8.04	8.0	26.66	26.66	26.7	63.7	64.2	64.0	4.20	4.26	4.23
	-		Bottom	-	-	-	-	-	-	-	-	-	-	-	-	-	-	-	-

Remarks:
Single underline denotes exceedance over Action Level.
Double underline denotes exceedance over Limit Level.



**Water Monitoring Result at Ex-WPCWA SW - South-western corners of ex-Public Cargo Works Area
Mid-Flood Tide**

Date	Time	Weater Condition	Sampling Depth		Water Temperature			pH			Salinity			DO Saturation			DO		
					°C			-			ppt			%			mg/L		
					Value	Average		Value	Average		Value	Average		Value	Average		Value	Average	
27/5/2016	-	Fine	Surface	-	-	-	-	-	-	-	-	-	-	-	-	-	-	-	-
	20:52		Middle	1.0	27.00	27.00	27.0	8.78	8.78	8.8	18.09	18.09	18.1	54.8	54.4	54.6	4.10	3.96	4.03
	-		Bottom	-	-	-	-	-	-	-	-	-	-	-	-	-	-	-	-
30/5/2016	-	Fine	Surface	-	-	-	-	-	-	-	-	-	-	-	-	-	-	-	-
	11:05		Middle	1.0	27.30	27.30	27.3	8.51	8.51	8.5	22.20	22.20	22.2	53.7	54.2	54.0	3.75	3.79	3.77
	-		Bottom	-	-	-	-	-	-	-	-	-	-	-	-	-	-	-	-
1/6/2016	-	Fine	Surface	-	-	-	-	-	-	-	-	-	-	-	-	-	-	-	-
	15:35		Middle	1.5	28.30	28.30	28.3	8.58	8.58	8.6	19.25	19.25	19.3	52.1	52.9	52.5	3.65	3.70	3.68
	-		Bottom	-	-	-	-	-	-	-	-	-	-	-	-	-	-	-	-
3/6/2016	-	Fine	Surface	-	-	-	-	-	-	-	-	-	-	-	-	-	-	-	-
	17:06		Middle	1.5	28.30	28.30	28.3	8.72	8.72	8.7	18.29	18.29	18.3	59.4	58.8	59.1	4.18	4.13	4.16
	-		Bottom	-	-	-	-	-	-	-	-	-	-	-	-	-	-	-	-
6/6/2016	-	Cloudy	Surface	-	-	-	-	-	-	-	-	-	-	-	-	-	-	-	-
	18:35		Middle	1.0	26.80	26.60	26.7	8.80	8.80	8.8	13.02	13.02	13.0	50.7	51.3	51.0	3.77	3.82	3.80
	-		Bottom	-	-	-	-	-	-	-	-	-	-	-	-	-	-	-	-
8/6/2016	-	Cloudy	Surface	-	-	-	-	-	-	-	-	-	-	-	-	-	-	-	-
	18:38		Middle	1.0	27.40	27.40	27.4	8.53	8.53	8.5	20.90	20.90	20.9	52.0	52.4	52.2	3.66	3.69	3.68
	-		Bottom	-	-	-	-	-	-	-	-	-	-	-	-	-	-	-	-
10/6/2016	-	Cloudy	Surface	-	-	-	-	-	-	-	-	-	-	-	-	-	-	-	-
	21:00		Middle	1.0	26.30	26.30	26.3	8.76	8.76	8.8	12.83	12.83	12.8	51.4	52.0	51.7	4.18	4.21	4.20
	-		Bottom	-	-	-	-	-	-	-	-	-	-	-	-	-	-	-	-
14/6/2016	-	Cloudy	Surface	-	-	-	-	-	-	-	-	-	-	-	-	-	-	-	-
	23:10		Middle	1.0	27.70	27.70	27.7	8.84	8.84	8.8	18.43	18.43	18.4	56.4	56.8	56.6	3.91	3.93	3.92
	-		Bottom	-	-	-	-	-	-	-	-	-	-	-	-	-	-	-	-
16/6/2016	-	Cloudy	Surface	-	-	-	-	-	-	-	-	-	-	-	-	-	-	-	-
	4:18		Middle	1.0	28.10	28.10	28.1	8.53	8.53	8.5	14.61	14.61	14.6	54.1	54.7	54.4	3.90	3.97	3.94
	-		Bottom	-	-	-	-	-	-	-	-	-	-	-	-	-	-	-	-
18/6/2016	-	Fine	Surface	-	-	-	-	-	-	-	-	-	-	-	-	-	-	-	-
	17:50		Middle	1.5	26.90	26.90	26.9	8.56	8.56	8.6	17.14	17.14	17.1	50.4	50.3	50.4	3.65	3.65	3.65
	-		Bottom	-	-	-	-	-	-	-	-	-	-	-	-	-	-	-	-
20/6/2016	-	Fine	Surface	-	-	-	-	-	-	-	-	-	-	-	-	-	-	-	-
	18:33		Middle	1.0	27.80	27.80	27.8	8.94	8.94	8.9	10.66	10.66	10.7	54.9	55.4	55.2	4.01	4.18	4.10
	-		Bottom	-	-	-	-	-	-	-	-	-	-	-	-	-	-	-	-
22/6/2016	-	Fine	Surface	-	-	-	-	-	-	-	-	-	-	-	-	-	-	-	-
	18:07		Middle	1.0	28.40	28.40	28.4	8.92	8.90	8.9	15.37	15.38	15.4	57.2	56.5	56.9	4.01	3.96	3.99
	-		Bottom	-	-	-	-	-	-	-	-	-	-	-	-	-	-	-	-
24/6/2016	-	Fine	Surface	-	-	-	-	-	-	-	-	-	-	-	-	-	-	-	-
	19:43		Middle	1.0	29.20	29.20	29.2	8.66	8.66	8.7	16.30	16.30	16.3	59.5	58.5	59.0	3.93	3.84	3.89
	-		Bottom	-	-	-	-	-	-	-	-	-	-	-	-	-	-	-	-

Remarks:
Single underline denotes exceedance over Action Level.
Double underline denotes exceedance over Limit Level.



**Water Monitoring Result at Ex-WPCWA SE - South-eastern corners of ex-Public Cargo Works Area
Mid-Flood Tide**

Date	Time	Weater Condition	Sampling Depth		Water Temperature			pH			Salinity		DO Saturation			DO			
					°C			-			ppt		%			mg/L			
			m	Value	Average	Value	Average	Value	Average	Value	Average	Value	Average	Value	Average				
27/5/2016	20:56	Fine	Surface	1.0	26.50	26.50	26.5	8.40	8.40	8.4	21.02	21.02	21.0	56.4	56.9	56.7	4.00	4.12	4.06
	-		Middle	2.0	-	-	-	-	-	-	-	-	-	-	-	-	-	-	-
	20:57		Bottom	3.0	26.60	26.60	26.6	8.38	8.38	8.4	20.74	20.75	20.7	56.0	56.6	56.3	3.97	4.06	4.02
30/5/2016	11:40	Fine	Surface	1.0	27.50	27.50	27.5	8.47	8.47	8.5	27.03	27.03	27.0	69.5	68.0	68.8	4.12	4.62	4.37
	-		Middle	2.5	-	-	-	-	-	-	-	-	-	-	-	-	-	-	
	11:39		Bottom	4.0	27.40	27.40	27.4	8.38	8.38	8.4	27.45	27.45	27.5	67.9	68.8	68.4	4.61	4.67	4.64
1/6/2016	15:30	Fine	Surface	1.0	28.50	28.50	28.5	8.60	8.60	8.6	23.59	23.59	23.6	64.0	63.3	63.7	4.35	4.31	4.33
	-		Middle	2.5	-	-	-	-	-	-	-	-	-	-	-	-	-	-	
	15:32		Bottom	4.0	28.80	28.80	28.8	8.58	8.58	8.6	22.03	22.03	22.0	64.2	64.3	64.3	4.39	4.39	4.39
3/6/2016	17:02	Fine	Surface	1.0	28.50	28.50	28.5	8.65	8.65	8.7	24.12	27.12	25.6	74.5	73.5	74.0	5.06	4.99	5.03
	-		Middle	2.0	-	-	-	-	-	-	-	-	-	-	-	-	-	-	
	17:04		Bottom	3.0	28.50	28.50	28.5	8.67	8.67	8.7	24.14	24.14	24.1	81.5	80.4	81.0	5.49	5.45	5.47
6/6/2016	18:40	Cloudy	Surface	1.0	26.70	26.70	26.7	8.32	8.32	8.3	25.44	25.44	25.4	56.1	57.0	56.6	3.89	3.96	3.93
	-		Middle	2.0	-	-	-	-	-	-	-	-	-	-	-	-	-	-	
	18:41		Bottom	3.0	26.70	26.70	26.7	8.37	8.37	8.4	25.53	25.53	25.5	58.9	59.2	59.1	4.08	4.11	4.10
8/6/2016	18:41	Cloudy	Surface	1.0	27.40	27.40	27.4	8.44	8.44	8.4	20.68	20.68	20.7	52.6	53.0	52.8	3.70	3.73	3.72
	-		Middle	2.0	-	-	-	-	-	-	-	-	-	-	-	-	-	-	
	18:42		Bottom	3.0	27.40	27.40	27.4	8.42	8.42	8.4	20.53	20.53	20.5	55.0	55.2	55.1	3.87	3.88	3.88
10/6/2016	21:05	Cloudy	Surface	1.0	26.20	26.20	26.2	8.58	8.58	8.6	12.79	12.79	12.8	58.2	58.0	58.1	4.75	4.70	4.73
	-		Middle	2.0	-	-	-	-	-	-	-	-	-	-	-	-	-	-	
	21:06		Bottom	3.0	26.20	26.20	26.2	8.52	8.52	8.5	12.63	12.68	12.7	59.4	59.2	59.3	4.75	4.74	4.75
14/6/2016	-	Cloudy	Surface	-	-	-	-	-	-	-	-	-	-	-	-	-	-	-	
	-		Middle	0.0	-	-	-	-	-	-	-	-	-	-	-	-	-	-	
	-		Bottom	-	-	-	-	-	-	-	-	-	-	-	-	-	-	-	
16/6/2016	4:23	Cloudy	Surface	1.0	28.20	28.20	28.2	8.38	8.38	8.4	14.48	14.48	14.5	53.4	55.5	54.5	3.86	3.99	3.93
	-		Middle	2.5	-	-	-	-	-	-	-	-	-	-	-	-	-	-	
	4:24		Bottom	4.0	28.20	28.20	28.2	8.32	8.32	8.3	14.49	14.49	14.5	55.2	56.0	55.6	3.97	4.08	4.03
18/6/2016	17:45	Fine	Surface	1.0	26.90	26.90	26.9	8.51	8.51	8.5	21.91	21.91	21.9	53.6	52.1	52.9	3.78	3.67	3.73
	-		Middle	2.5	-	-	-	-	-	-	-	-	-	-	-	-	-	-	
	17:47		Bottom	4.0	26.80	26.80	26.8	8.52	8.52	8.5	23.47	23.47	23.5	53.9	55.9	54.9	3.78	3.92	3.85
20/6/2016	18:38	Fine	Surface	1.0	28.00	28.00	28.0	8.73	8.73	8.7	10.66	10.67	10.7	57.0	58.6	57.8	4.40	4.55	4.48
	-		Middle	2.0	-	-	-	-	-	-	-	-	-	-	-	-	-	-	
	18:39		Bottom	3.0	28.00	28.00	28.0	8.67	8.67	8.7	10.65	10.64	10.6	58.9	57.4	58.2	4.60	4.34	4.47
22/6/2016	18:12	Fine	Surface	1.0	28.50	28.50	28.5	8.68	8.68	8.7	15.38	15.38	15.4	54.5	54.9	54.7	3.81	3.85	3.83
	-		Middle	2.0	-	-	-	-	-	-	-	-	-	-	-	-	-	-	
	18:13		Bottom	3.0	28.50	28.50	28.5	8.63	8.63	8.6	15.36	15.36	15.4	55.8	56.3	56.1	3.90	3.94	3.92
24/6/2016	19:49	Fine	Surface	1.0	29.10	29.10	29.1	8.48	8.48	8.5	15.10	15.10	15.1	60.0	61.8	60.9	3.98	4.07	4.03
	-		Middle	2.0	-	-	-	-	-	-	-	-	-	-	-	-	-	-	
	19:50		Bottom	3.0	29.10	29.10	29.1	8.42	8.42	8.4	15.08	15.08	15.1	60.5	61.5	61.0	3.99	4.05	4.02

Remarks:
Single underline denotes exceedance over Action Level.
Double underline denotes exceedance over Limit Level.



**Water Monitoring Result at C6 - Excelsior Hotel
Mid-Ebb Tide**

Date	Time	Weater Condition	Sampling Depth		Water Temperature			pH			Salinity		DO Saturation		DO				
			m		°C		-		ppt		%		mg/L						
					Value	Average	Value	Average	Value	Average	Value	Average	Value	Average					
27/5/2016	-	Strong Wind Signal No. 3	Surface	-	-	-	-	-	-	-	-	-	-	-	-	-	-	-	
	-		Middle	0	-	-	-	-	-	-	-	-	-	-	-	-	-	-	-
	-		Bottom	-	-	-	-	-	-	-	-	-	-	-	-	-	-	-	-
30/5/2016	-	Cloudy	Surface	-	-	-	-	-	-	-	-	-	-	-	-	-	-	-	-
	18:40		Middle	2	27.90	27.90	27.9	8.32	8.32	8.3	23.63	26.63	25.1	56.3	56.8	56.6	3.87	3.90	3.89
	-		Bottom	-	-	-	-	-	-	-	-	-	-	-	-	-	-	-	-
1/6/2016	-	Fine	Surface	-	-	-	-	-	-	-	-	-	-	-	-	-	-	-	-
	10:12		Middle	1	28.20	28.20	28.2	8.25	8.25	8.3	26.39	26.39	26.4	70.3	69.2	69.8	4.73	4.66	4.70
	-		Bottom	-	-	-	-	-	-	-	-	-	-	-	-	-	-	-	-
3/6/2016	-	Fine	Surface	-	-	-	-	-	-	-	-	-	-	-	-	-	-	-	-
	11:59		Middle	2	28.50	28.50	28.5	8.54	8.54	8.5	23.31	23.31	23.3	66.1	66.9	66.5	4.50	4.56	4.53
	-		Bottom	-	-	-	-	-	-	-	-	-	-	-	-	-	-	-	-
6/6/2016	-	Amber Rainstorm Warning Signal	Surface	-	-	-	-	-	-	-	-	-	-	-	-	-	-	-	-
	-		Middle	-	-	-	-	-	-	-	-	-	-	-	-	-	-	-	-
	-		Bottom	-	-	-	-	-	-	-	-	-	-	-	-	-	-	-	-
8/6/2016	11:45	Cloudy	Surface	1	27.30	27.30	27.3	8.44	8.44	8.4	26.47	26.47	26.5	68.5	69.5	69.0	4.67	4.73	4.70
	-		Middle	2	-	-	-	-	-	-	-	-	-	-	-	-	-	-	-
	11:47		Bottom	3	27.20	27.20	27.2	8.44	8.44	8.4	27.95	27.95	28.0	71.7	71.2	71.5	4.89	4.85	4.87
10/6/2016	-	Fine	Surface	-	-	-	-	-	-	-	-	-	-	-	-	-	-	-	-
	17:25		Middle	2	26.90	26.90	26.9	8.41	8.41	8.4	27.41	27.41	27.4	67.3	64.0	65.7	4.37	4.18	4.28
	-		Bottom	-	-	-	-	-	-	-	-	-	-	-	-	-	-	-	-
13/6/2016	-	Cloudy	Surface	-	-	-	-	-	-	-	-	-	-	-	-	-	-	-	-
	18:00		Middle	2	27.90	27.90	27.9	7.95	7.97	8.0	22.58	22.58	22.6	59.4	59.8	59.6	4.07	4.14	4.11
	-		Bottom	-	-	-	-	-	-	-	-	-	-	-	-	-	-	-	-
16/6/2016	-	Fine	Surface	-	-	-	-	-	-	-	-	-	-	-	-	-	-	-	-
	11:50		Middle	1	28.00	28.00	28.0	8.32	8.32	8.3	20.20	20.20	20.2	63.4	64.4	63.9	4.43	4.54	4.49
	-		Bottom	-	-	-	-	-	-	-	-	-	-	-	-	-	-	-	-
18/6/2016	-	Fine	Surface	-	-	-	-	-	-	-	-	-	-	-	-	-	-	-	-
	12:30		Middle	2	27.00	27.00	27.0	8.10	8.10	8.1	23.42	23.42	23.4	55.7	54.6	55.2	3.89	3.81	3.85
	-		Bottom	-	-	-	-	-	-	-	-	-	-	-	-	-	-	-	-
20/6/2016	12:25	Sunny	Surface	1	28.50	28.50	28.5	8.68	8.68	8.7	26.74	26.74	26.7	85.6	87.3	86.5	5.76	5.87	5.82
	-		Middle	2	-	-	-	-	-	-	-	-	-	-	-	-	-	-	-
	12:27		Bottom	3	27.90	27.90	27.9	8.70	8.70	8.7	27.57	27.57	27.6	87.0	86.9	87.0	5.89	5.88	5.89
22/6/2016	11:50	Sunny	Surface	1	28.10	28.10	28.1	8.59	8.59	8.6	26.26	26.26	26.3	81.7	81.1	81.4	5.51	5.46	5.49
	-		Middle	3	-	-	-	-	-	-	-	-	-	-	-	-	-	-	-
	11:54		Bottom	4	27.10	27.10	27.1	8.62	8.62	8.6	28.60	28.60	28.6	72.7	75.4	74.1	4.93	5.11	5.02
24/6/2016	12:00	Fine	Surface	1	28.10	28.10	28.1	8.57	8.57	8.6	28.44	28.44	28.4	81.2	79.9	80.6	5.42	5.33	5.38
	-		Middle	2	-	-	-	-	-	-	-	-	-	-	-	-	-	-	-
	12:02		Bottom	3	28.10	28.10	28.1	8.67	8.67	8.7	28.25	28.25	28.3	80.8	80.4	80.6	5.41	5.38	5.40

Remarks:
Single underline denotes exceedance over Action Level.
Double underline denotes exceedance over Limit Level.



**Water Monitoring Result at Ex-WPCWA SW - South-western corners of ex-Public Cargo Works Area
Mid-Ebb Tide**

Date	Time	Weather Condition	Sampling Depth		Water Temperature			pH			Salinity		DO Saturation		DO				
					°C			-			ppt		%		mg/L				
			m	Value	Average	Value	Average	Value	Average	Value	Average	Value	Average	Value	Average				
27/5/2016	-	Strong Wind Signal No. 3	Surface	-	-	-	-	-	-	-	-	-	-	-	-	-	-	-	
	-		Middle	0.0	-	-	-	-	-	-	-	-	-	-	-	-	-	-	
	-		Bottom	-	-	-	-	-	-	-	-	-	-	-	-	-	-	-	
30/5/2016	-	Cloudy	Surface	-	-	-	-	-	-	-	-	-	-	-	-	-	-	-	
	18:59		Middle	1.5	27.80	27.80	27.8	8.44	8.44	8.4	15.24	15.24	15.2	53.9	54.6	54.3	3.74	3.86	3.80
	-		Bottom	-	-	-	-	-	-	-	-	-	-	-	-	-	-	-	
1/6/2016	-	Fine	Surface	-	-	-	-	-	-	-	-	-	-	-	-	-	-	-	
	9:58		Middle	1.0	27.20	27.20	27.2	8.28	8.28	8.3	18.17	18.17	18.2	46.1	46.1	46.1	3.30	3.31	3.31
	-		Bottom	-	-	-	-	-	-	-	-	-	-	-	-	-	-	-	
3/6/2016	-	Fine	Surface	-	-	-	-	-	-	-	-	-	-	-	-	-	-	-	
	11:43		Middle	1.5	27.90	27.90	27.9	8.65	8.65	8.7	17.75	17.75	17.8	46.7	46.9	46.8	3.31	3.33	3.32
	-		Bottom	-	-	-	-	-	-	-	-	-	-	-	-	-	-	-	
6/6/2016	-	Amber Rainstorm Warning Signal	Surface	-	-	-	-	-	-	-	-	-	-	-	-	-	-	-	
	-		Middle	-	-	-	-	-	-	-	-	-	-	-	-	-	-		
	-		Bottom	-	-	-	-	-	-	-	-	-	-	-	-	-	-		
8/6/2016	-	Cloudy	Surface	-	-	-	-	-	-	-	-	-	-	-	-	-	-	-	
	16:00		Middle	1.5	26.80	26.80	26.8	8.73	8.73	8.7	8.11	8.11	8.1	52.6	52.3	52.5	4.02	4.00	4.01
	-		Bottom	-	-	-	-	-	-	-	-	-	-	-	-	-	-		
10/6/2016	-	Fine	Surface	-	-	-	-	-	-	-	-	-	-	-	-	-	-	-	
	17:00		Middle	1.5	26.50	26.50	26.5	8.57	8.57	8.6	20.96	20.96	21.0	43.2	43.3	43.3	3.09	3.10	<u>3.10</u>
	-		Bottom	-	-	-	-	-	-	-	-	-	-	-	-	-	-		
13/6/2016	-	Cloudy	Surface	-	-	-	-	-	-	-	-	-	-	-	-	-	-	-	
	18:35		Middle	1.5	27.10	27.10	27.1	8.83	8.83	8.8	17.68	17.68	17.7	57.2	56.7	57.0	3.94	3.87	3.91
	-		Bottom	-	-	-	-	-	-	-	-	-	-	-	-	-	-		
16/6/2016	-	Fine	Surface	-	-	-	-	-	-	-	-	-	-	-	-	-	-	-	
	11:35		Middle	1.5	26.70	26.70	26.7	8.75	8.75	8.8	6.05	6.05	6.1	30.3	30.6	30.5	2.34	2.36	<u>2.35</u>
	-		Bottom	-	-	-	-	-	-	-	-	-	-	-	-	-	-		
18/6/2016	0:00	Fine	Surface	-	-	-	-	-	-	-	-	-	-	-	-	-	-	-	
	12:22		Middle	1.5	26.50	26.50	26.5	8.79	8.79	8.8	5.84	5.84	5.8	28.8	28.1	28.5	2.24	2.19	<u>2.22</u>
	-		Bottom	-	-	-	-	-	-	-	-	-	-	-	-	-	-		
20/6/2016	-	Sunny	Surface	-	-	-	-	-	-	-	-	-	-	-	-	-	-	-	
	15:35		Middle	1.0	28.30	28.30	28.3	8.91	8.91	8.9	11.50	11.50	11.5	55.5	55.7	55.6	4.06	4.07	4.07
	-		Bottom	-	-	-	-	-	-	-	-	-	-	-	-	-	-		
22/6/2016	-	Sunny	Surface	-	-	-	-	-	-	-	-	-	-	-	-	-	-	-	
	11:28		Middle	1.5	26.90	26.90	26.9	8.67	8.67	8.7	20.25	20.25	20.3	46.6	46.2	46.4	3.31	3.29	3.30
	-		Bottom	-	-	-	-	-	-	-	-	-	-	-	-	-	-		
24/6/2016	-	Fine	Surface	-	-	-	-	-	-	-	-	-	-	-	-	-	-	-	
	16:10		Middle	1.5	26.90	26.90	26.9	8.72	8.72	8.7	10.88	10.88	10.9	21.2	20.7	21.0	1.59	1.55	<u>1.57</u>
	-		Bottom	-	-	-	-	-	-	-	-	-	-	-	-	-	-		

Remarks:
Single underline denotes exceedance over Action Level.
Double underline denotes exceedance over Limit Level.



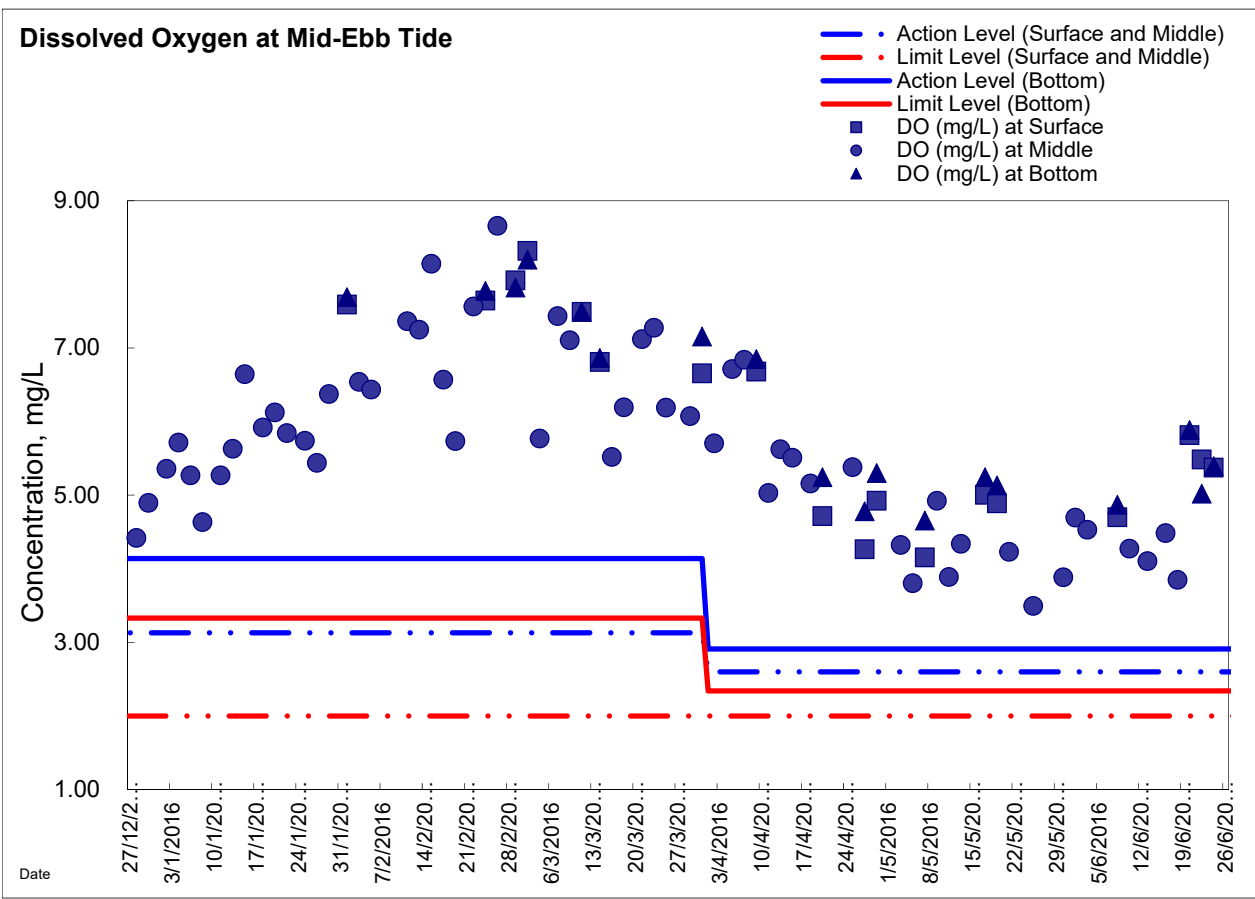
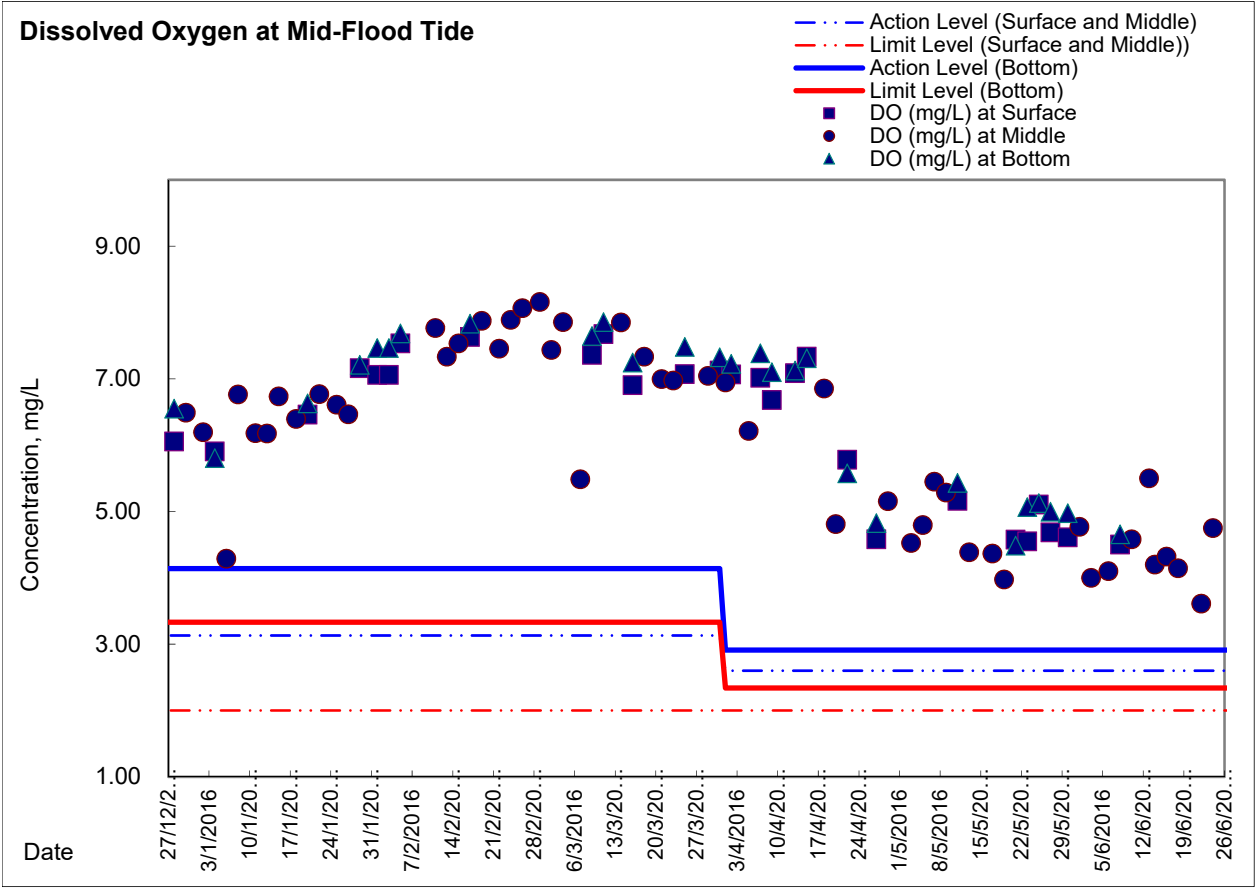
**Water Monitoring Result at Ex-WPCWA SE - South-eastern corners of ex-Public Cargo Works Area
Mid-Ebb Tide**

Date	Time	Weather Condition	Sampling Depth		Water Temperature			pH			Salinity		DO Saturation		DO				
					°C			-			ppt		%		mg/L				
			m	Value	Average	Value	Average	Value	Average	Value	Average	Value	Average	Value	Average				
27/5/2016	-	Strong Wind Signal No. 3	Surface	-	-	-	-	-	-	-	-	-	-	-	-	-	-	-	
	-		Middle	0.0	-	-	-	-	-	-	-	-	-	-	-	-	-	-	
	-		Bottom	-	-	-	-	-	-	-	-	-	-	-	-	-	-	-	
30/5/2016	19:03	Cloudy	Surface	1.0	27.30	27.30	27.3	8.82	8.82	8.8	14.16	14.16	14.2	54.4	54.0	54.2	4.09	4.06	4.08
	-		Middle	2.5	-	-	-	-	-	-	-	-	-	-	-	-	-	-	-
	19:04		Bottom	4.0	27.60	27.60	27.6	8.50	8.50	8.5	14.17	14.17	14.2	56.9	56.7	56.8	3.98	3.98	3.98
1/6/2016	9:53	Fine	Surface	1.0	27.40	27.40	27.4	8.61	8.61	8.6	19.89	19.89	19.9	54.1	53.3	53.7	3.81	3.76	3.79
	-		Middle	2.0	-	-	-	-	-	-	-	-	-	-	-	-	-	-	-
	9:55		Bottom	3.0	27.10	27.10	27.1	8.56	8.56	8.6	15.83	15.83	15.8	50.3	48.1	49.2	3.66	3.49	<u>3.58</u>
3/6/2016	11:39	Fine	Surface	1.0	28.50	28.50	28.5	8.62	8.62	8.6	24.35	24.35	24.4	67.9	67.0	67.5	4.60	4.53	4.57
	-		Middle	2.0	-	-	-	-	-	-	-	-	-	-	-	-	-	-	-
	11:41		Bottom	3.0	28.30	28.30	28.3	8.62	8.62	8.6	23.08	23.08	23.1	67.6	66.7	67.2	4.62	4.56	4.59
6/6/2016	-	Amber Rainstorm Warning Signal	Surface	-	-	-	-	-	-	-	-	-	-	-	-	-	-	-	
	-		Middle	-	-	-	-	-	-	-	-	-	-	-	-	-	-	-	
	-		Bottom	-	-	-	-	-	-	-	-	-	-	-	-	-	-	-	
8/6/2016	16:05	Cloudy	Surface	1.0	26.60	26.60	26.6	8.44	8.44	8.4	13.07	13.07	13.1	54.8	54.2	54.5	4.08	4.04	4.06
	-		Middle	2.0	-	-	-	-	-	-	-	-	-	-	-	-	-	-	-
	16:07		Bottom	3.0	26.60	26.60	26.6	8.34	8.34	8.3	16.94	16.94	16.9	60.9	61.4	61.2	4.43	4.46	4.45
10/6/2016	16:55	Fine	Surface	1.0	26.80	26.80	26.8	8.53	8.53	8.5	27.04	27.04	27.0	61.9	61.5	61.7	4.25	4.23	4.24
	-		Middle	2.5	-	-	-	-	-	-	-	-	-	-	-	-	-	-	-
	16:57		Bottom	4.0	26.80	26.80	26.8	8.51	8.51	8.5	27.03	27.03	27.0	67.4	66.7	67.1	4.62	4.57	4.60
13/6/2016	18:41	Cloudy	Surface	1.0	27.30	27.30	27.3	8.48	8.48	8.5	17.48	17.48	17.5	58.8	59.3	59.1	4.29	4.45	4.37
	-		Middle	2.5	-	-	-	-	-	-	-	-	-	-	-	-	-	-	-
	18:42		Bottom	4.0	27.50	27.50	27.5	8.47	8.47	8.5	17.56	17.56	17.6	56.9	55.4	56.2	4.17	4.08	4.13
16/6/2016	11:31	Fine	Surface	1.0	27.90	27.90	27.9	8.51	8.51	8.5	18.26	18.26	18.3	64.5	64.1	64.3	4.57	4.54	4.56
	-		Middle	2.5	-	-	-	-	-	-	-	-	-	-	-	-	-	-	-
	11:33		Bottom	4.0	27.80	27.80	27.8	8.46	8.46	8.5	19.36	19.36	19.4	66.9	66.3	66.6	4.71	4.67	4.69
18/6/2016	12:18	Fine	Surface	1.0	27.10	27.10	27.1	8.50	8.50	8.5	21.83	21.83	21.8	63.9	64.2	64.1	4.50	4.52	4.51
	-		Middle	2.5	-	-	-	-	-	-	-	-	-	-	-	-	-	-	-
	12:20		Bottom	4.0	26.70	26.70	26.7	8.42	8.42	8.4	25.41	25.41	25.4	54.9	55.4	55.2	3.81	3.85	3.83
20/6/2016	15:30	Sunny	Surface	1.0	28.90	28.90	28.9	8.73	8.73	8.7	18.18	18.18	18.2	82.2	84.2	83.2	5.73	5.86	5.80
	-		Middle	2.0	-	-	-	-	-	-	-	-	-	-	-	-	-	-	-
	15:32		Bottom	3.0	28.50	28.50	28.5	8.72	8.72	8.7	20.20	20.20	20.2	84.6	84.2	84.4	6.57	6.54	6.56
22/6/2016	11:24	Sunny	Surface	1.0	27.60	27.60	27.6	8.55	8.55	8.6	26.99	26.99	27.0	69.6	69.1	69.4	4.71	4.66	4.69
	-		Middle	2.5	-	-	-	-	-	-	-	-	-	-	-	-	-	-	-
	11:26		Bottom	4.0	26.90	26.90	26.9	8.56	8.56	8.6	29.29	29.30	29.3	60.0	59.1	59.6	4.06	4.01	4.04
24/6/2016	16:06	Fine	Surface	1.0	27.20	27.20	27.2	8.66	8.66	8.7	24.88	24.88	24.9	75.3	75.1	75.2	5.19	5.18	5.19
	-		Middle	2.0	-	-	-	-	-	-	-	-	-	-	-	-	-	-	-
	16:08		Bottom	3.0	27.20	27.20	27.2	8.69	8.69	8.7	19.09	19.09	19.1	55.3	54.8	55.1	3.94	3.91	3.93

Remarks:
Single underline denotes exceedance over Action Level.
Double underline denotes exceedance over Limit Level.

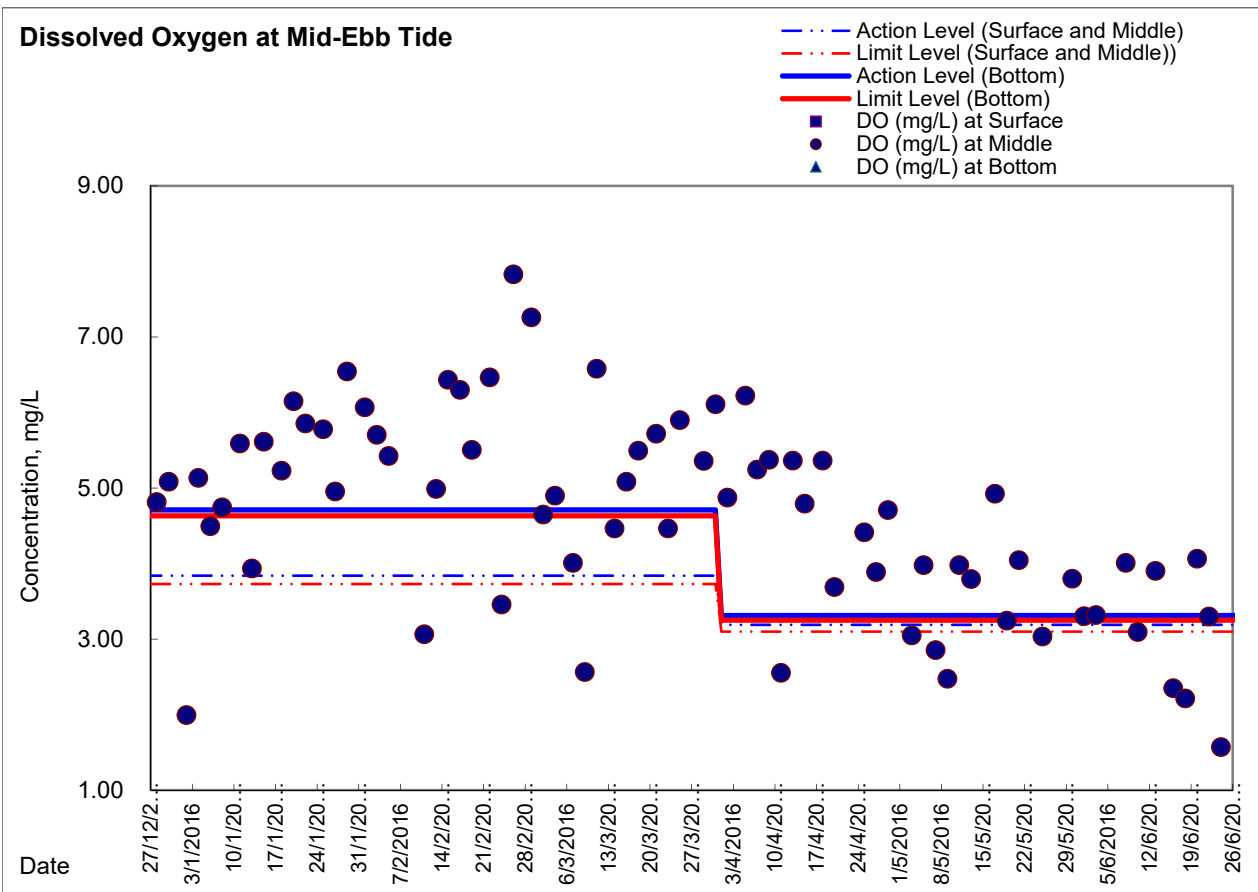
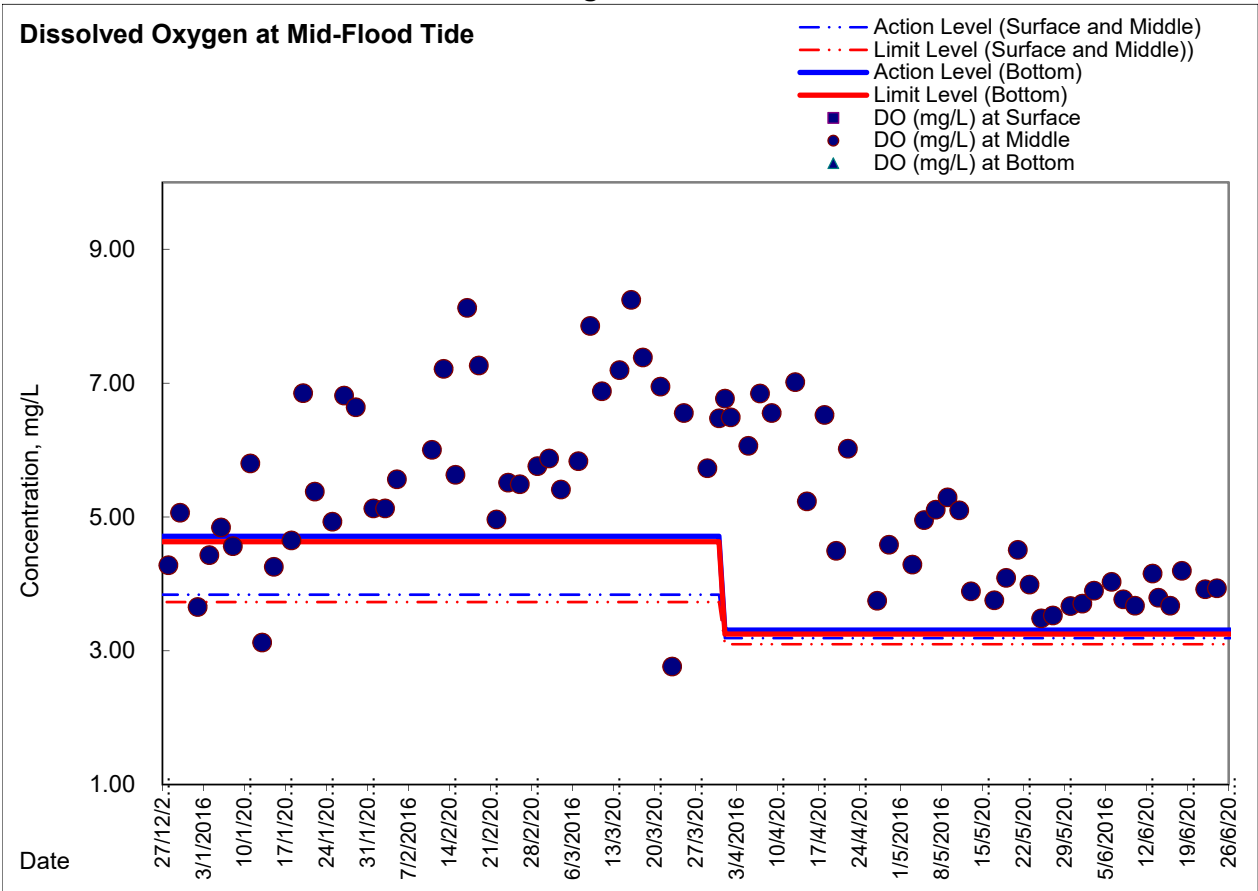


Graphic Presentation of Enhanced Water Monitoring Results (DO) at C6 - Excelsior Hotel





Graphic Presentation of Enhanced Water Monitoring Results (DO) at Ex-WPCWA SW - South-western corners of ex-Public Cargo Works Area





Graphic Presentation of Enhanced Water Monitoring Results (DO) at Ex-WPCWA SE - South-eastern corners of ex-Public Cargo Works Area

